

Product datasheet for **TA810008BM**

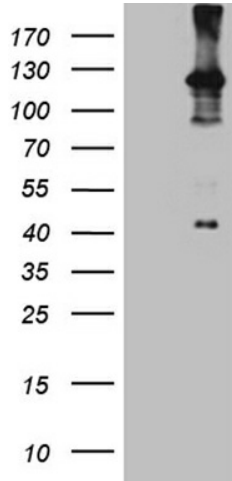
ROR2 Mouse Monoclonal Antibody (HRP conjugated) [Clone ID: OTI3H3]

Product data:

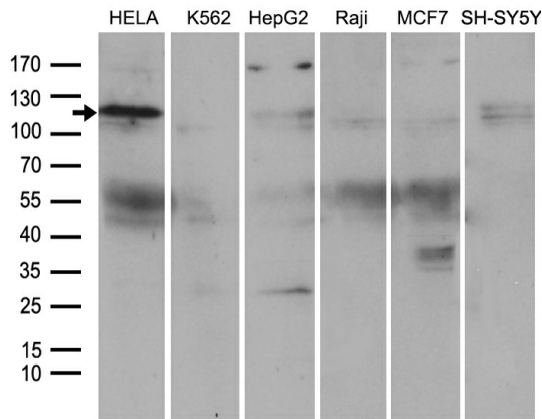
Product Type:	Primary Antibodies
Clone Name:	OTI3H3
Applications:	IHC, WB
Recommended Dilution:	WB 1:500~2000, IHC 1:500
Reactivity:	Human, Mouse, Rat
Host:	Mouse
Isotype:	IgG1
Clonality:	Monoclonal
Immunogen:	Human recombinant protein fragment corresponding to amino acids 796-927 of human ROR2 (NP_004551) produced in E.coli.
Formulation:	PBS (pH 7.3) containing 1% BSA, 50% glycerol.
Concentration:	0.5 mg/ml
Purification:	Purified from mouse ascites fluids or tissue culture supernatant by affinity chromatography (protein A/G)
Conjugation:	HRP
Storage:	Store at -20°C as received.
Stability:	Stable for 12 months from date of receipt.
Predicted Protein Size:	101.3 kDa
Gene Name:	receptor tyrosine kinase like orphan receptor 2
Database Link:	NP_004551 Entrez Gene 26564 Mouse Entrez Gene 306782 Rat Entrez Gene 4920 Human Q01974
Synonyms:	BDB; BDB1; NTRKR2
Protein Families:	Druggable Genome, Protein Kinase, Transmembrane



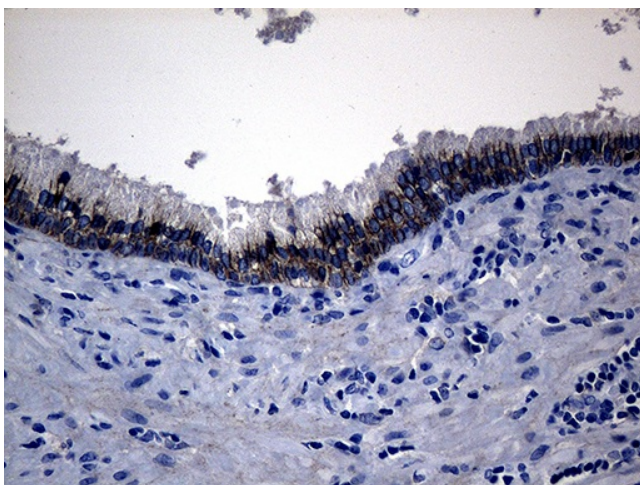
[View online »](#)

Product images:


HEK293T cells were transfected with the pCMV6-ENTRY control (Left lane) or pCMV6-ENTRY ROR2 ([RC215640], Right lane) cDNA for 48 hrs and lysed. Equivalent amounts of cell lysates (5 ug per lane) were separated by SDS-PAGE and immunoblotted with anti-ROR2 (1:2000). Positive lysates [LY417906] (100ug) and [LC417906] (20ug) can be purchased separately from OriGene.



Western blot analysis of extracts (35ug) from 6 different cell lines by using anti-ROR2 monoclonal antibody (1:500).



Immunohistochemical staining of paraffin-embedded Human prostate tissue within the normal limits using anti-ROR2 mouse monoclonal antibody. (Heat-induced epitope retrieval by 1mM EDTA in 10mM Tris buffer (pH8.5) at 120°C for 3min, [TA810008]) (1:500)