

## Product datasheet for **TA810004**

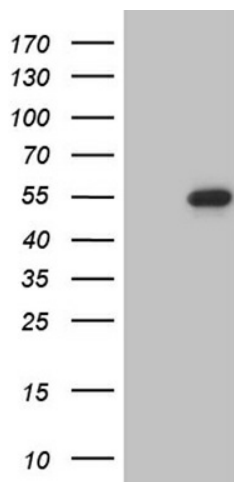
### LSM11 Mouse Monoclonal Antibody [Clone ID: OTI2G7]

#### Product data:

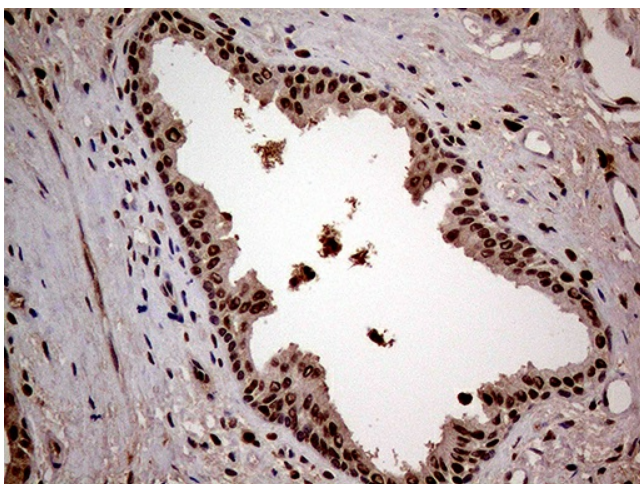
Product Type:	Primary Antibodies
Clone Name:	OTI2G7
Applications:	IHC, WB
Recommended Dilution:	WB 1:2000, IHC 1:2000
Reactivity:	Human, Mouse, Rat
Host:	Mouse
Isotype:	IgG1
Clonality:	Monoclonal
Immunogen:	Full length human recombinant protein of human LSM11(NP_775762) produced in E.coli.
Formulation:	PBS (pH 7.3) containing 1% BSA, 50% glycerol and 0.02% sodium azide.
Concentration:	1 mg/ml
Purification:	Purified from mouse ascites fluids or tissue culture supernatant by affinity chromatography (protein A/G)
Conjugation:	Unconjugated
Storage:	Store at -20°C as received.
Stability:	Stable for 12 months from date of receipt.
Predicted Protein Size:	39.3 kDa
Gene Name:	LSM11, U7 small nuclear RNA associated
Database Link:	<a href="#">NP_775762</a> <a href="#">Entrez Gene 134353 Human</a> <a href="#">P83369</a>
Synonyms:	FLJ38273



[View online »](#)

**Product images:**

HEK293T cells were transfected with the pCMV6-ENTRY control (Cat# [PS100001], Left lane) or pCMV6-ENTRY LSM11 (Cat# [RC223484], Right lane) cDNA for 48 hrs and lysed. Equivalent amounts of cell lysates (5 ug per lane) were separated by SDS-PAGE and immunoblotted with anti-LSM11 (Cat# TA810004)(1:2000). Positive lysates [LY403564] (100ug) and [LC403564] (20ug) can be purchased separately from OriGene.



Immunohistochemical staining of paraffin-embedded Carcinoma of Human prostate tissue using anti-LSM11 mouse monoclonal antibody. (Heat-induced epitope retrieval by 1mM EDTA in 10mM Tris buffer (pH8.5) at 120°C for 3min, TA810004) (1:2000)