

## Product datasheet for **TA81000S**

### ALAS2 Mouse Monoclonal Antibody [Clone ID: OTI2E4]

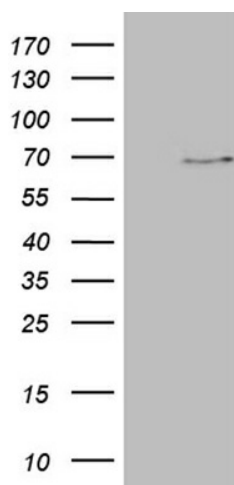
#### Product data:

Product Type:	Primary Antibodies
Clone Name:	OTI2E4
Applications:	WB
Recommended Dilution:	WB 1:2000
Reactivity:	Human, Mouse, Rat
Host:	Mouse
Isotype:	IgG1
Clonality:	Monoclonal
Immunogen:	Human recombinant protein fragment corresponding to amino acids 139-287 of human ALAS2(NP_000023) produced in E.coli.
Formulation:	PBS (pH 7.3) containing 1% BSA, 50% glycerol and 0.02% sodium azide.
Concentration:	1 mg/ml
Purification:	Purified from mouse ascites fluids or tissue culture supernatant by affinity chromatography (protein A/G)
Conjugation:	Unconjugated
Storage:	Store at -20°C as received.
Stability:	Stable for 12 months from date of receipt.
Predicted Protein Size:	59.5 kDa
Gene Name:	5'-aminolevulinate synthase 2
Database Link:	<a href="#">NP_000023</a> <a href="#">Entrez Gene 11656 Mouse</a> <a href="#">Entrez Gene 25748 Rat</a> <a href="#">Entrez Gene 212 Human</a> <a href="#">P22557</a>
Background:	The product of this gene specifies an erythroid-specific mitochondrially located enzyme. The encoded protein catalyzes the first step in the heme biosynthetic pathway. Defects in this gene cause X-linked pyridoxine-responsive sideroblastic anemia. Alternatively spliced transcript variants encoding different isoforms have been identified. [provided by RefSeq, Jul 2008]



[View online »](#)

<b>Synonyms:</b>	ALAS-E; ALASE; ANH1; ASB; SIDBA1; XLDPP; XLEPP; XLSA
<b>Protein Families:</b>	Druggable Genome
<b>Protein Pathways:</b>	Glycine, serine and threonine metabolism, Metabolic pathways, Porphyrin and chlorophyll metabolism

**Product images:**

HEK293T cells were transfected with the pCMV6-ENTRY control (Cat# [PS100001], Left lane) or pCMV6-ENTRY ALAS2 (Cat# [RC219079], Right lane) cDNA for 48 hrs and lysed. Equivalent amounts of cell lysates (5 ug per lane) were separated by SDS-PAGE and immunoblotted with anti-ALAS2 (Cat# [TA810000])(1:2000). Positive lysates [LY424966] (100ug) and [LC424966] (20ug) can be purchased separately from OriGene.