

Product datasheet for **TA810000BM**

ALAS2 Mouse Monoclonal Antibody (HRP conjugated) [Clone ID: OTI2E4]

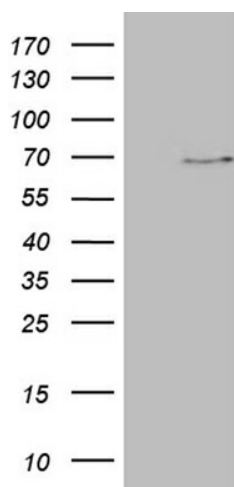
Product data:

| | |
|-------------------------|--|
| Product Type: | Primary Antibodies |
| Clone Name: | OTI2E4 |
| Applications: | WB |
| Recommended Dilution: | WB 1:2000 |
| Reactivity: | Human, Mouse, Rat |
| Host: | Mouse |
| Isotype: | IgG1 |
| Clonality: | Monoclonal |
| Immunogen: | Human recombinant protein fragment corresponding to amino acids 139-287 of human ALAS2(NP_000023) produced in E.coli. |
| Formulation: | PBS (pH 7.3) containing 1% BSA, 50% glycerol. |
| Concentration: | 0.5 mg/ml |
| Purification: | Purified from mouse ascites fluids or tissue culture supernatant by affinity chromatography (protein A/G) |
| Conjugation: | HRP |
| Storage: | Store at -20°C as received. |
| Stability: | Stable for 12 months from date of receipt. |
| Predicted Protein Size: | 59.5 kDa |
| Gene Name: | 5'-aminolevulinate synthase 2 |
| Database Link: | NP_000023 Entrez Gene 11656 Mouse Entrez Gene 25748 Rat Entrez Gene 212 Human P22557 |
| Background: | The product of this gene specifies an erythroid-specific mitochondrially located enzyme. The encoded protein catalyzes the first step in the heme biosynthetic pathway. Defects in this gene cause X-linked pyridoxine-responsive sideroblastic anemia. Alternatively spliced transcript variants encoding different isoforms have been identified. [provided by RefSeq, Jul 2008] |



[View online »](#)

| | |
|--------------------------|--|
| Synonyms: | ALAS-E; ALASE; ANH1; ASB; SIDBA1; XLDPP; XLEPP; XLSA |
| Protein Families: | Druggable Genome |
| Protein Pathways: | Glycine, serine and threonine metabolism, Metabolic pathways, Porphyrin and chlorophyll metabolism |

Product images:

HEK293T cells were transfected with the pCMV6-ENTRY control (Cat# [PS100001], Left lane) or pCMV6-ENTRY ALAS2 (Cat# [RC219079], Right lane) cDNA for 48 hrs and lysed. Equivalent amounts of cell lysates (5 ug per lane) were separated by SDS-PAGE and immunoblotted with anti-ALAS2 (Cat# [TA810000])(1:2000). Positive lysates [LY424966] (100ug) and [LC424966] (20ug) can be purchased separately from OriGene.