

## Product datasheet for **TA809996AM**

### **RHOH Mouse Monoclonal Antibody (Biotin conjugated) [Clone ID: OTI9F4]**

#### **Product data:**

Product Type:	Primary Antibodies
Clone Name:	OTI9F4
Applications:	WB
Recommended Dilution:	WB 1:2000
Reactivity:	Human, Mouse, Rat
Host:	Mouse
Isotype:	IgG1
Clonality:	Monoclonal
Immunogen:	Human recombinant protein fragment corresponding to amino acids 97-190 of human RHOH(NP_004301) produced in E.coli.
Formulation:	PBS (pH 7.3) containing 1% BSA, 50% glycerol and 0.02% sodium azide.
Concentration:	0.5 mg/ml
Purification:	Purified from mouse ascites fluids or tissue culture supernatant by affinity chromatography (protein A/G)
Conjugation:	Biotin
Storage:	Store at -20°C as received.
Stability:	Stable for 12 months from date of receipt.
Predicted Protein Size:	21.1 kDa
Gene Name:	ras homolog family member H
Database Link:	<a href="#">NP_004301</a> <a href="#">Entrez Gene 74734 Mouse</a> <a href="#">Entrez Gene 305341 Rat</a> <a href="#">Entrez Gene 399 Human</a> <a href="#">Q15669</a>



[View online »](#)

**Background:**

The protein encoded by this gene is a member of the Ras superfamily of guanosine triphosphate (GTP)-metabolizing enzymes. The encoded protein is expressed in hematopoietic cells, where it functions as a negative regulator of cell growth and survival. This gene may be hypermutated or misexpressed in leukemias and lymphomas. Chromosomal translocations in non-Hodgkin's lymphoma occur between this locus and B-cell CLL/lymphoma 6 (BCL6) on chromosome 3, leading to the production of fusion transcripts. Alternative splicing in the 5' untranslated region results in multiple transcript variants that encode the same protein. [provided by RefSeq, May 2013]

**Synonyms:**

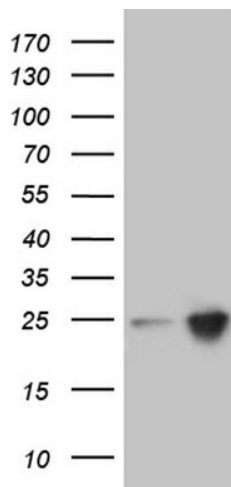
ARHH; TTF

**Protein Families:**

Transcription Factors

**Protein Pathways:**

Leukocyte transendothelial migration

**Product images:**

HEK293T cells were transfected with the pCMV6-ENTRY control (Cat# [PS100001], Left lane) or pCMV6-ENTRY RHOH (Cat# [RC204324], Right lane) cDNA for 48 hrs and lysed. Equivalent amounts of cell lysates (5 ug per lane) were separated by SDS-PAGE and immunoblotted with anti-RHOH (Cat# [TA809996])(1:2000). Positive lysates [LY401372] (100ug) and [LC401372] (20ug) can be purchased separately from OriGene.