

Product datasheet for **TA809989**

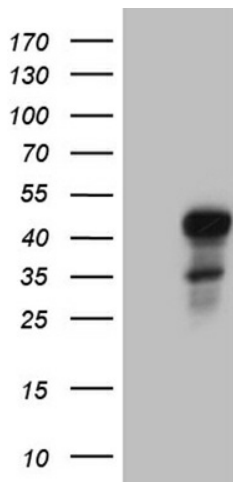
ESE1 (ELF3) Mouse Monoclonal Antibody [Clone ID: OTI6G6]

Product data:

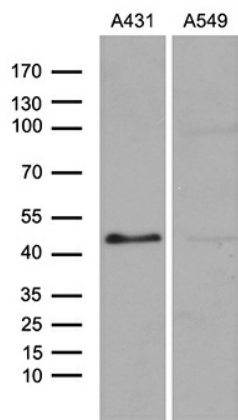
| | |
|--------------------------------|--------------------------------------------------------------------------------------------------------------------------------------------------------------|
| Product Type: | Primary Antibodies |
| Clone Name: | OTI6G6 |
| Applications: | IHC, WB |
| Recommended Dilution: | WB 1:500~2000, IHC 1:250 |
| Reactivity: | Human, Mouse, Rat |
| Host: | Mouse |
| Isotype: | IgG1 |
| Clonality: | Monoclonal |
| Immunogen: | Human recombinant protein fragment corresponding to amino acids 175-286 of human ELF3(NP_001107781) produced in E.coli. |
| Formulation: | PBS (pH 7.3) containing 1% BSA, 50% glycerol and 0.02% sodium azide. |
| Concentration: | 1 mg/ml |
| Purification: | Purified from mouse ascites fluids or tissue culture supernatant by affinity chromatography (protein A/G) |
| Conjugation: | Unconjugated |
| Storage: | Store at -20°C as received. |
| Stability: | Stable for 12 months from date of receipt. |
| Predicted Protein Size: | 41.3 kDa |
| Gene Name: | E74 like ETS transcription factor 3 |
| Database Link: | NP_001107781 Entrez Gene 13710 Mouse Entrez Gene 304815 Rat Entrez Gene 1999 Human P78545 |
| Synonyms: | EPR-1; ERT; ESE-1; ESX |
| Protein Families: | Transcription Factors |



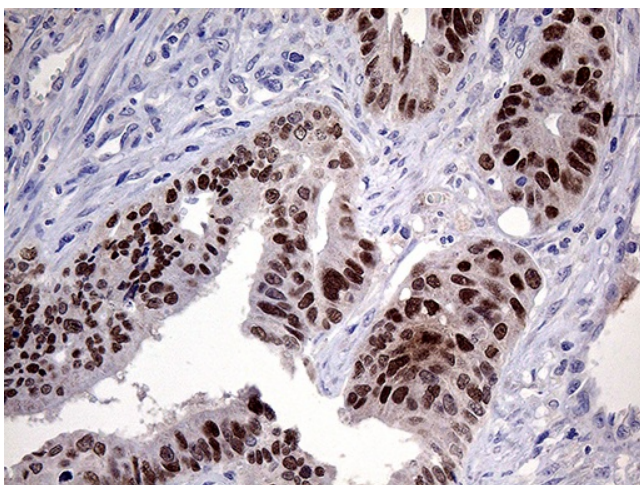
[View online »](#)

Product images:


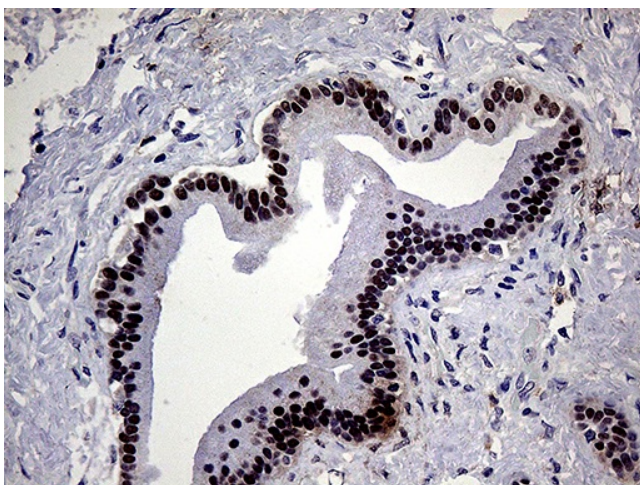
HEK293T cells were transfected with the pCMV6-ENTRY control (Cat# [PS100001], Left lane) or pCMV6-ENTRY ELF3 (Cat# [RC225564], Right lane) cDNA for 48 hrs and lysed. Equivalent amounts of cell lysates (5 ug per lane) were separated by SDS-PAGE and immunoblotted with anti-ELF3 (Cat# TA809989)(1:2000). Positive lysates [LY426477] (100ug) and [LC426477] (20ug) can be purchased separately from OriGene.



Western blot analysis of extracts (35ug) from 2 different cell lines by using anti-ELF3 monoclonal antibody (1:500).



Immunohistochemical staining of paraffin-embedded Adenocarcinoma of Human colon tissue using anti-ELF3 mouse monoclonal antibody. (Heat-induced epitope retrieval by 1mM EDTA in 10mM Tris buffer (pH8.5) at 120°C for 3min, TA809989) (1:250)



Immunohistochemical staining of paraffin-embedded Carcinoma of Human pancreas tissue using anti-ELF3 mouse monoclonal antibody. (Heat-induced epitope retrieval by 1mM EDTA in 10mM Tris buffer (pH8.5) at 120°C for 3min, TA809989) (1:250)