

## Product datasheet for **TA809972**

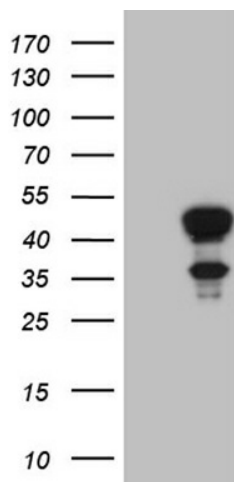
### **ESE1 (ELF3) Mouse Monoclonal Antibody [Clone ID: OTI3F2]**

#### **Product data:**

Product Type:	Primary Antibodies
Clone Name:	OTI3F2
Applications:	WB
Recommended Dilution:	WB 1:2000
Reactivity:	Human, Mouse, Rat
Host:	Mouse
Isotype:	IgG2b
Clonality:	Monoclonal
Immunogen:	Human recombinant protein fragment corresponding to amino acids 175-286 of human ELF3(NP_001107781) produced in E.coli.
Formulation:	PBS (pH 7.3) containing 1% BSA, 50% glycerol and 0.02% sodium azide.
Concentration:	1 mg/ml
Purification:	Purified from mouse ascites fluids or tissue culture supernatant by affinity chromatography (protein A/G)
Conjugation:	Unconjugated
Storage:	Store at -20°C as received.
Stability:	Stable for 12 months from date of receipt.
Predicted Protein Size:	41.3 kDa
Gene Name:	E74 like ETS transcription factor 3
Database Link:	<a href="#">NP_001107781</a> <a href="#">Entrez Gene 13710 Mouse</a> <a href="#">Entrez Gene 304815 Rat</a> <a href="#">Entrez Gene 1999 Human P78545</a>
Synonyms:	EPR-1; ERT; ESE-1; ESX
Protein Families:	Transcription Factors



[View online »](#)

**Product images:**

HEK293T cells were transfected with the pCMV6-ENTRY control (Left lane) or pCMV6-ENTRY ELF3 ([RC225564], Right lane) cDNA for 48 hrs and lysed. Equivalent amounts of cell lysates (5 ug per lane) were separated by SDS-PAGE and immunoblotted with anti-ELF3 (1:2000). Positive lysates [LY426477] (100ug) and [LC426477] (20ug) can be purchased separately from OriGene.