

## Product datasheet for **TA809971**

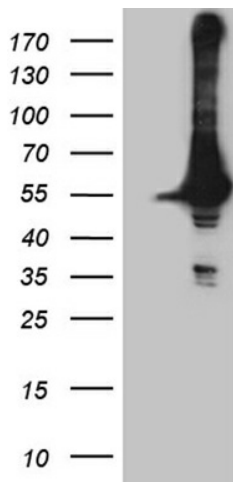
### DDX19A Mouse Monoclonal Antibody [Clone ID: OTI3C12]

#### Product data:

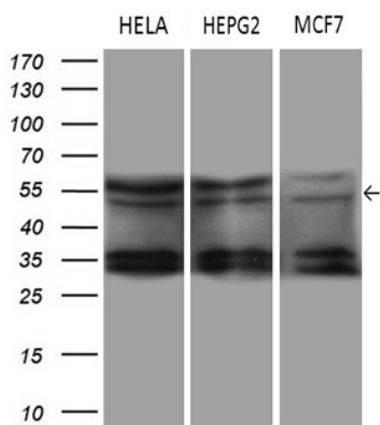
|                         |   |
|-------------------------|---|
| Product Type:           | Primary Antibodies  |
| Clone Name:             | OTI3C12   |
| Applications:           | IHC, WB   |
| Recommended Dilution:   | WB 1:500~2000, IHC 1:500  |
| Reactivity:             | Human, Mouse, Rat   |
| Host:                   | Mouse   |
| Isotype:                | IgG1  |
| Clonality:              | Monoclonal  |
| Immunogen:              | Full length human recombinant protein of human DDX19A (NP_060802) produced in HEK293T cell.   |
| Formulation:            | PBS (pH 7.3) containing 1% BSA, 50% glycerol and 0.02% sodium azide.  |
| Concentration:          | 1 mg/ml   |
| Purification:           | Purified from mouse ascites fluids or tissue culture supernatant by affinity chromatography (protein A/G)   |
| Conjugation:            | Unconjugated  |
| Storage:                | Store at -20°C as received.   |
| Stability:              | Stable for 12 months from date of receipt.  |
| Predicted Protein Size: | 53.8 kDa  |
| Gene Name:              | DEAD-box helicase 19A   |
| Database Link:          | <a href="#">NP_060802</a><br><a href="#">Entrez Gene 13680 Mouse</a> <a href="#">Entrez Gene 292022 Rat</a> <a href="#">Entrez Gene 55308 Human</a><br><a href="#">Q9NUU7</a>   |
| Background:             | ATP-dependent RNA helicase involved in mRNA export from the nucleus. Rather than unwinding RNA duplexes, DDX19 functions as a remodeler of ribonucleoprotein particles, whereby proteins bound to nuclear mRNA are dissociated and replaced by cytoplasmic mRNA binding proteins. [UniProtKB/Swiss-Prot Function] |
| Synonyms:               | DDX19-DDX19L; DDX19L  |



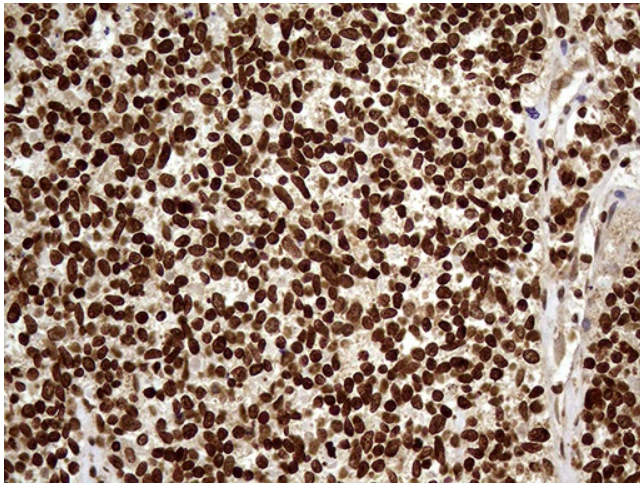
[View online »](#)

**Product images:**


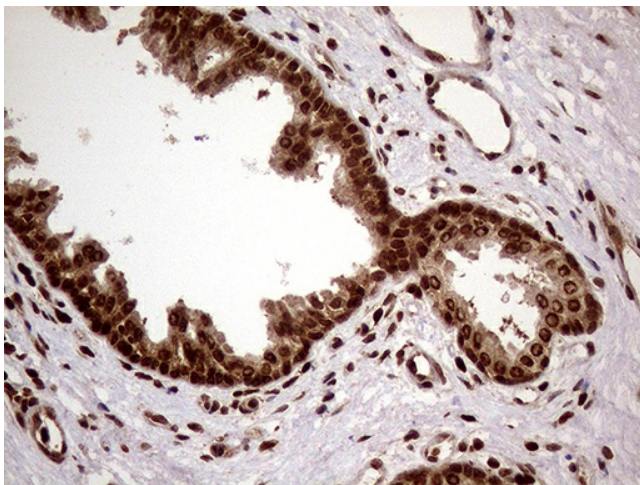
HEK293T cells were transfected with the pCMV6-ENTRY control (Cat# [PS100001], Left lane) or pCMV6-ENTRY DDX19A (Cat# [RC200751], Right lane) cDNA for 48 hrs and lysed. Equivalent amounts of cell lysates (5 ug per lane) were separated by SDS-PAGE and immunoblotted with anti-DDX19A (Cat# TA809971)(1:2000). Positive lysates [LY413127] (100ug) and [LC413127] (20ug) can be purchased separately from OriGene.



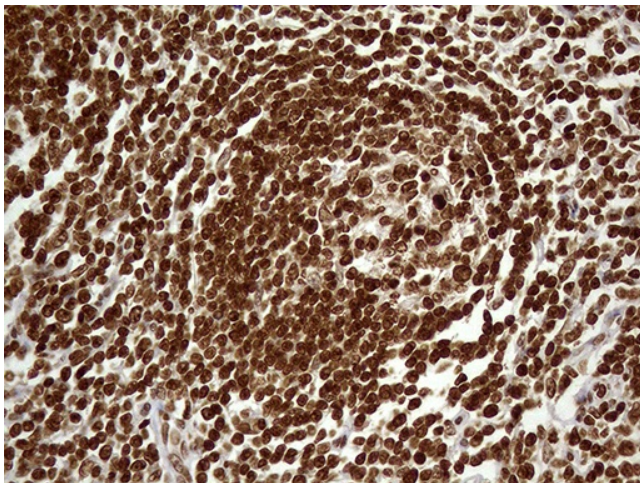
Western blot analysis of extracts (35ug) from 3 different cell lines by using anti-DDX19A monoclonal antibody (1:500).



Immunohistochemical staining of paraffin-embedded Carcinoma of Human kidney tissue using anti-DDX19A mouse monoclonal antibody. (Heat-induced epitope retrieval by 1mM EDTA in 10mM Tris buffer (pH8.5) at 120°C for 3min, TA809971) (1:500)



Immunohistochemical staining of paraffin-embedded Carcinoma of Human prostate tissue using anti-DDX19A mouse monoclonal antibody. (Heat-induced epitope retrieval by 1mM EDTA in 10mM Tris buffer (pH8.5) at 120°C for 3min, TA809971) (1:500)



Immunohistochemical staining of paraffin-embedded Human lymph node tissue within the normal limits using anti-DDX19A mouse monoclonal antibody. (Heat-induced epitope retrieval by 1mM EDTA in 10mM Tris buffer (pH8.5) at 120°C for 3min, TA809971) (1:500)