

Product datasheet for **TA809961AM**

LSM11 Mouse Monoclonal Antibody (Biotin conjugated) [Clone ID: OTI1H1]

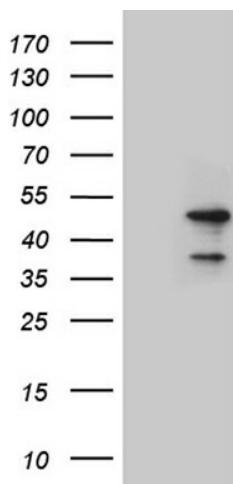
Product data:

Product Type:	Primary Antibodies
Clone Name:	OTI1H1
Applications:	WB
Recommended Dilution:	WB 1:500~2000
Reactivity:	Human, Mouse, Rat
Host:	Mouse
Isotype:	IgG2a
Clonality:	Monoclonal
Immunogen:	Full length human recombinant protein of human LSM11(NP_775762) produced in E.coli.
Formulation:	PBS (pH 7.3) containing 1% BSA, 50% glycerol and 0.02% sodium azide.
Concentration:	0.5 mg/ml
Purification:	Purified from mouse ascites fluids or tissue culture supernatant by affinity chromatography (protein A/G)
Conjugation:	Biotin
Storage:	Store at -20°C as received.
Stability:	Stable for 12 months from date of receipt.
Predicted Protein Size:	39.3 kDa
Gene Name:	LSM11, U7 small nuclear RNA associated
Database Link:	NP_775762 Entrez Gene 134353 Human P83369
Synonyms:	FLJ38273

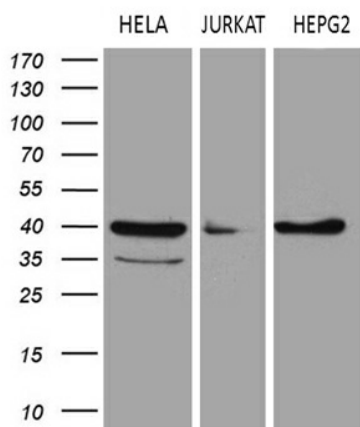


[View online »](#)

Product images:



HEK293T cells were transfected with the pCMV6-ENTRY control (Left lane) or pCMV6-ENTRY LSM11 ([RC223484], Right lane) cDNA for 48 hrs and lysed. Equivalent amounts of cell lysates (5 ug per lane) were separated by SDS-PAGE and immunoblotted with anti-LSM11 (1:2000). Positive lysates [LY403564] (100ug) and [LC403564] (20ug) can be purchased separately from OriGene.



Western blot analysis of extracts (35ug) from 3 different cell lines by using anti-LSM11 monoclonal antibody (1:500).