

Product datasheet for **TA809960S**

PCMT1 Mouse Monoclonal Antibody [Clone ID: OTI4A4]

Product data:

Product Type:	Primary Antibodies
Clone Name:	OTI4A4
Applications:	IHC, WB
Recommended Dilution:	WB 1:500~2000, IHC 1:500
Reactivity:	Human
Host:	Mouse
Isotype:	IgG2a
Clonality:	Monoclonal
Immunogen:	Human recombinant protein fragment corresponding to amino acids 60-285 of human PCMT1(NP_005380) produced in E.coli.
Formulation:	PBS (pH 7.3) containing 1% BSA, 50% glycerol and 0.02% sodium azide.
Concentration:	1 mg/ml
Purification:	Purified from mouse ascites fluids or tissue culture supernatant by affinity chromatography (protein A/G)
Conjugation:	Unconjugated
Storage:	Store at -20°C as received.
Stability:	Stable for 12 months from date of receipt.
Predicted Protein Size:	30.1 kDa
Gene Name:	protein-L-isoaspartate (D-aspartate) O-methyltransferase
Database Link:	NP_005380 Entrez Gene 5110 Human P22061



[View online »](#)

Background:

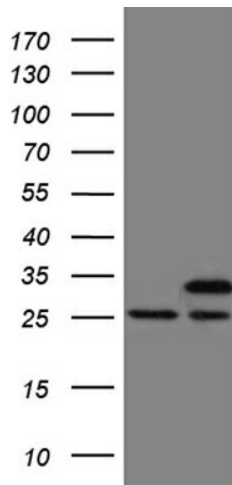
This gene encodes a member of the type II class of protein carboxyl methyltransferase enzymes. The encoded enzyme plays a role in protein repair by recognizing and converting D-aspartyl and L-isoaspartyl residues resulting from spontaneous deamidation back to the normal L-aspartyl form. The encoded protein may play a protective role in the pathogenesis of Alzheimer's disease, and single nucleotide polymorphisms in this gene have been associated with spina bifida and premature ovarian failure. Alternatively spliced transcript variants encoding multiple isoforms have been observed for this gene. [provided by RefSeq, Oct 2011]

Synonyms:

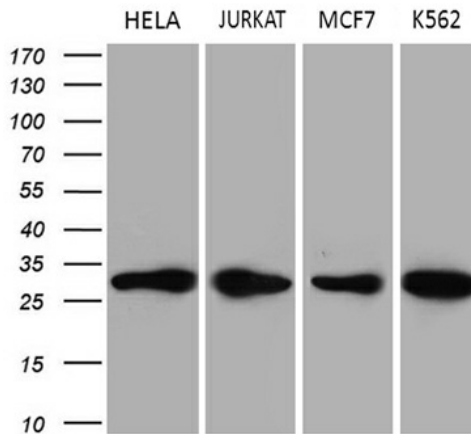
PIMT

Protein Families:

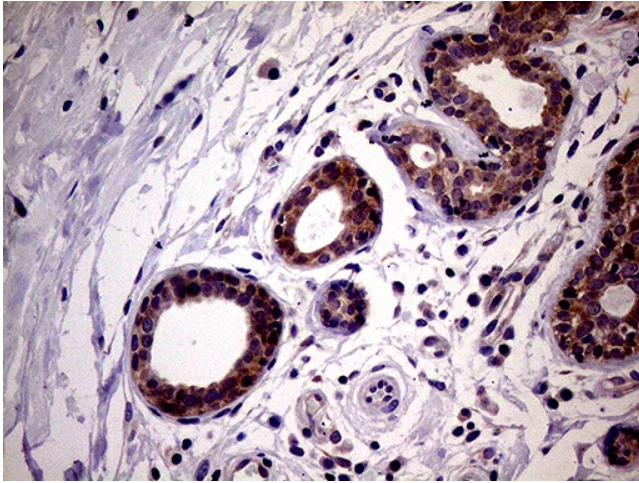
Druggable Genome

Product images:


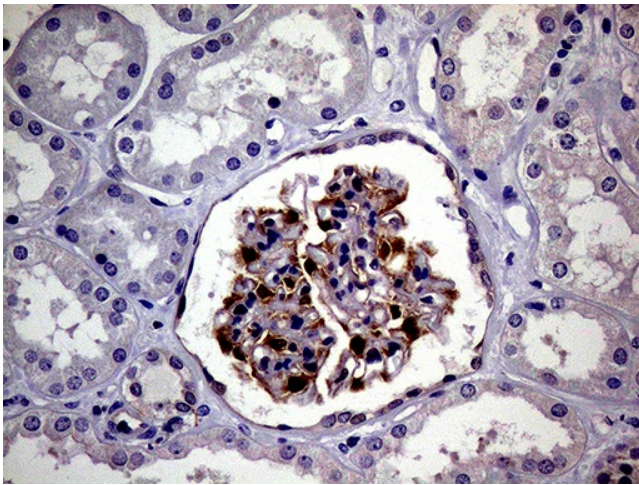
HEK293T cells were transfected with the pCMV6-ENTRY control (Left lane) or pCMV6-ENTRY PCMT1 ([RC200327], Right lane) cDNA for 48 hrs and lysed. Equivalent amounts of cell lysates (5 ug per lane) were separated by SDS-PAGE and immunoblotted with anti-PCMT1 (1:2000). Positive lysates [LY432164] (100ug) and [LC432164] (20ug) can be purchased separately from OriGene.



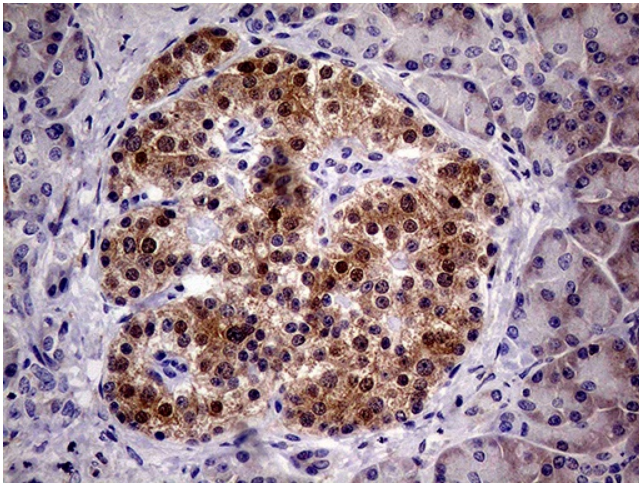
Western blot analysis of extracts (35ug) from 4 different cell lines by using anti-PCMT1 monoclonal antibody (1:500).



Immunohistochemical staining of paraffin-embedded Human breast tissue within the normal limits using anti-PCMT1 mouse monoclonal antibody. (Heat-induced epitope retrieval by 1mM EDTA in 10mM Tris buffer (pH8.5) at 120°C for 3min, [TA809960]) (1:500)



Immunohistochemical staining of paraffin-embedded Human Kidney tissue within the normal limits using anti-PCMT1 mouse monoclonal antibody. (Heat-induced epitope retrieval by 1mM EDTA in 10mM Tris buffer (pH8.5) at 120°C for 3min, [TA809960]) (1:500)



Immunohistochemical staining of paraffin-embedded Human pancreas tissue within the normal limits using anti-PCMT1 mouse monoclonal antibody. (Heat-induced epitope retrieval by 1mM EDTA in 10mM Tris buffer (pH8.5) at 120°C for 3min, [TA809960]) (1:500)