

## Product datasheet for **TA809948AM**

### **GTF2IRD1 Mouse Monoclonal Antibody (Biotin conjugated) [Clone ID: OTI9A3]**

#### **Product data:**

Product Type:	Primary Antibodies
Clone Name:	OTI9A3
Applications:	WB
Recommended Dilution:	WB 1:2000
Reactivity:	Human, Mouse, Rat
Host:	Mouse
Isotype:	IgG1
Clonality:	Monoclonal
Immunogen:	Human recombinant protein fragment corresponding to amino acids 400-540 of human GTF2IRD1 (NP_057412) produced in E.coli.
Formulation:	PBS (pH 7.3) containing 1% BSA, 50% glycerol and 0.02% sodium azide.
Concentration:	0.5 mg/ml
Purification:	Purified from mouse ascites fluids or tissue culture supernatant by affinity chromatography (protein A/G)
Conjugation:	Biotin
Storage:	Store at -20°C as received.
Stability:	Stable for 12 months from date of receipt.
Predicted Protein Size:	105.9 kDa
Gene Name:	GTF2I repeat domain containing 1
Database Link:	<a href="#">NP_057412</a> <a href="#">Entrez Gene 57080 Mouse</a> <a href="#">Entrez Gene 246770 Rat</a> <a href="#">Entrez Gene 9569 Human</a> <a href="#">Q9UHL9</a>



[View online »](#)

**Background:**

The protein encoded by this gene contains five GTF2I-like repeats and each repeat possesses a potential helix-loop-helix (HLH) motif. It may have the ability to interact with other HLH-proteins and function as a transcription factor or as a positive transcriptional regulator under the control of Retinoblastoma protein. This gene plays a role in craniofacial and cognitive development and mutations have been associated with Williams-Beuren syndrome, a multisystem developmental disorder caused by deletion of multiple genes at 7q11.23. Alternative splicing results in multiple transcript variants. [provided by RefSeq, Nov 2010]

**Synonyms:**

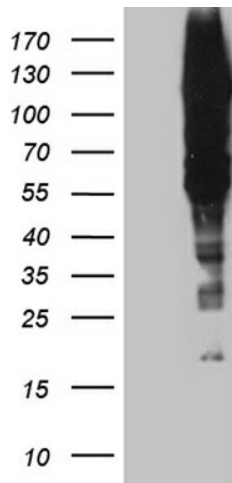
BEN; CREAM1; GTF3; hMusTRD1alpha1; MUSTRD1; RBAP2; WBS; WBSER11; WBSER12

**Protein Families:**

Druggable Genome, Transcription Factors

**Protein Pathways:**

Basal transcription factors

**Product images:**

HEK293T cells were transfected with the pCMV6-ENTRY control (Cat# [PS100001], Left lane) or pCMV6-ENTRY GTF2IRD1 (Cat# [RC202128], Right lane) cDNA for 48 hrs and lysed. Equivalent amounts of cell lysates (5 ug per lane) were separated by SDS-PAGE and immunoblotted with anti-GTF2IRD1 antibody (Cat# [TA809948]). Positive lysates [LY414061] (100ug) and [LC414061] (20ug) can be purchased separately from OriGene.