

Product datasheet for **TA809948**

GTF2IRD1 Mouse Monoclonal Antibody [Clone ID: OTI9A3]

Product data:

| | |
|-------------------------|--|
| Product Type: | Primary Antibodies |
| Clone Name: | OTI9A3 |
| Applications: | WB |
| Recommended Dilution: | WB 1:2000 |
| Reactivity: | Human, Mouse, Rat |
| Host: | Mouse |
| Isotype: | IgG1 |
| Clonality: | Monoclonal |
| Immunogen: | Human recombinant protein fragment corresponding to amino acids 400-540 of human GTF2IRD1 (NP_057412) produced in E.coli. |
| Formulation: | PBS (pH 7.3) containing 1% BSA, 50% glycerol and 0.02% sodium azide. |
| Concentration: | 1 mg/ml |
| Purification: | Purified from mouse ascites fluids or tissue culture supernatant by affinity chromatography (protein A/G) |
| Conjugation: | Unconjugated |
| Storage: | Store at -20°C as received. |
| Stability: | Stable for 12 months from date of receipt. |
| Predicted Protein Size: | 105.9 kDa |
| Gene Name: | GTF2I repeat domain containing 1 |
| Database Link: | NP_057412 Entrez Gene 57080 Mouse Entrez Gene 246770 Rat Entrez Gene 9569 Human Q9UHL9 |



[View online »](#)

Background:

The protein encoded by this gene contains five GTF2I-like repeats and each repeat possesses a potential helix-loop-helix (HLH) motif. It may have the ability to interact with other HLH-proteins and function as a transcription factor or as a positive transcriptional regulator under the control of Retinoblastoma protein. This gene plays a role in craniofacial and cognitive development and mutations have been associated with Williams-Beuren syndrome, a multisystem developmental disorder caused by deletion of multiple genes at 7q11.23. Alternative splicing results in multiple transcript variants. [provided by RefSeq, Nov 2010]

Synonyms:

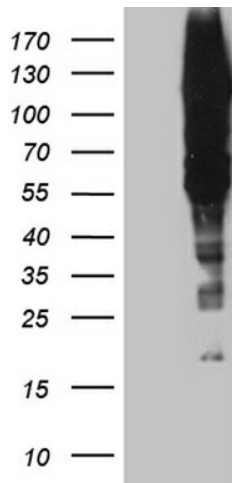
BEN; CREAM1; GTF3; hMusTRD1alpha1; MUSTRD1; RBAP2; WBS; WBSER11; WBSER12

Protein Families:

Druggable Genome, Transcription Factors

Protein Pathways:

Basal transcription factors

Product images:

HEK293T cells were transfected with the pCMV6-ENTRY control (Cat# [PS100001], Left lane) or pCMV6-ENTRY GTF2IRD1 (Cat# [RC202128], Right lane) cDNA for 48 hrs and lysed. Equivalent amounts of cell lysates (5 ug per lane) were separated by SDS-PAGE and immunoblotted with anti-GTF2IRD1 antibody (Cat# TA809948). Positive lysates [LY414061] (100ug) and [LC414061] (20ug) can be purchased separately from OriGene.