

Product datasheet for **TA809931S**

DCP1B Mouse Monoclonal Antibody [Clone ID: OTI1G8]

Product data:

Product Type:	Primary Antibodies
Clone Name:	OTI1G8
Applications:	WB
Recommended Dilution:	WB 1:2000
Reactivity:	Human
Host:	Mouse
Isotype:	IgG1
Clonality:	Monoclonal
Immunogen:	Human recombinant protein fragment corresponding to amino acids 167-473 of human DCP1B(NP_689853) produced in E.coli.
Formulation:	PBS (pH 7.3) containing 1% BSA, 50% glycerol and 0.02% sodium azide.
Concentration:	1 mg/ml
Purification:	Purified from mouse ascites fluids or tissue culture supernatant by affinity chromatography (protein A/G)
Conjugation:	Unconjugated
Storage:	Store at -20°C as received.
Stability:	Stable for 12 months from date of receipt.
Predicted Protein Size:	67.5 kDa
Gene Name:	decapping mRNA 1B
Database Link:	NP_689853 Entrez Gene 196513 Human Q8IZD4
Background:	DCP1B is a core component of the mRNA decapping complex, a key factor in the regulation of mRNA decay (Lykke-Andersen, 2002 [PubMed 12417715]). [supplied by OMIM, Mar 2008]. ##Evidence-Data-START## Transcript exon combination :: AY146652.1, AK056200.1 [ECO:0000332] RNAseq introns :: mixed/partial sample support ERS025081, ERS025082 [ECO:0000350] ##Evidence-Data-END##

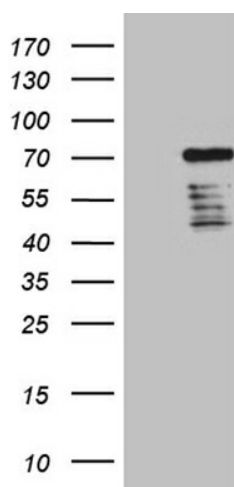


[View online »](#)

Synonyms: DCP1

Protein Pathways: RNA degradation

Product images:



HEK293T cells were transfected with the pCMV6-ENTRY control (Left lane) or pCMV6-ENTRY DCP1B ([RC207398], Right lane) cDNA for 48 hrs and lysed. Equivalent amounts of cell lysates (5 ug per lane) were separated by SDS-PAGE and immunoblotted with anti-DCP1B (1:2000). Positive lysates [LY407370] (100ug) and [LC407370] (20ug) can be purchased separately from OriGene.