

## Product datasheet for **TA809923AM**

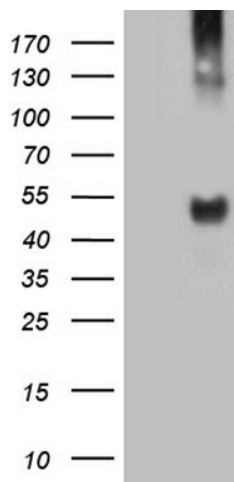
### TAT Mouse Monoclonal Antibody (Biotin conjugated) [Clone ID: OTI3G6]

#### Product data:

Product Type:	Primary Antibodies
Clone Name:	OTI3G6
Applications:	WB
Recommended Dilution:	WB 1:2000
Reactivity:	Human, Mouse, Rat
Host:	Mouse
Isotype:	IgG2a
Clonality:	Monoclonal
Immunogen:	Full length human recombinant protein of human TAT (NP_000344) produced in HEK293T cell.
Formulation:	PBS (pH 7.3) containing 1% BSA, 50% glycerol and 0.02% sodium azide.
Concentration:	0.5 mg/ml
Purification:	Purified from mouse ascites fluids or tissue culture supernatant by affinity chromatography (protein A/G)
Conjugation:	Biotin
Storage:	Store at -20°C as received.
Stability:	Stable for 12 months from date of receipt.
Predicted Protein Size:	50.2 kDa
Gene Name:	tyrosine aminotransferase
Database Link:	<a href="#">NP_000344</a> <a href="#">Entrez Gene 24813 Rat</a> <a href="#">Entrez Gene 234724 Mouse</a> <a href="#">Entrez Gene 6898 Human P17735</a>
Synonyms:	cytosolic; tyrosine aminotransferase
Protein Families:	Druggable Genome, Embryonic stem cells, ES Cell Differentiation/IPS
Protein Pathways:	Cysteine and methionine metabolism, Metabolic pathways, Phenylalanine, tyrosine and tryptophan biosynthesis, Phenylalanine metabolism, Tyrosine metabolism, Ubiquinone and other terpenoid-quinone biosynthesis



[View online »](#)

**Product images:**

HEK293T cells were transfected with the pCMV6-ENTRY control (Cat# [PS100001], Left lane) or pCMV6-ENTRY TAT (Cat# [RC216782], Right lane) cDNA for 48 hrs and lysed. Equivalent amounts of cell lysates (5 ug per lane) were separated by SDS-PAGE and immunoblotted with anti-TAT (Cat# [TA809923])(1:2000). Positive lysates [LY424771] (100ug) and [LC424771] (20ug) can be purchased separately from OriGene.