

Product datasheet for TA809923

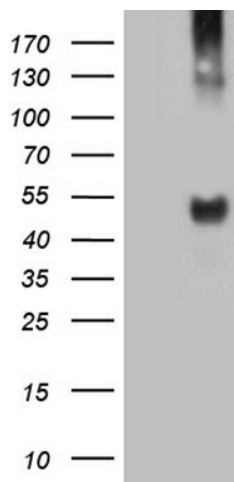
TAT Mouse Monoclonal Antibody [Clone ID: OTI3G6]

Product data:

Product Type:	Primary Antibodies
Clone Name:	OTI3G6
Applications:	WB
Recommend Dilution:	WB 1:2000
Reactivity:	Human
Host:	Mouse
Isotype:	IgG2a
Clonality:	Monoclonal
Immunogen:	Full length human recombinant protein of human TAT (NP_000344) produced in HEK293T cell.
Formulation:	PBS (PH 7.3) containing 1% BSA, 50% glycerol and 0.02% sodium azide.
Concentration:	1 mg/ml
Purification:	Purified from cell culture supernatant by affinity chromatography
Predicted Protein Size:	50.2 kDa
Gene Name:	tyrosine aminotransferase
Database Link:	NP_000344 Entrez Gene 6898 Human
Synonyms:	cytosolic; tyrosine aminotransferase
Protein Families:	Druggable Genome, Embryonic stem cells, ES Cell Differentiation/IPS
Protein Pathways:	Cysteine and methionine metabolism, Metabolic pathways, Phenylalanine, tyrosine and tryptophan biosynthesis, Phenylalanine metabolism, Tyrosine metabolism, Ubiquinone and other terpenoid-quinone biosynthesis



[View online »](#)

Product images:

HEK293T cells were transfected with the pCMV6-ENTRY control (Left lane) or pCMV6-ENTRY TAT (RC216782, Right lane) cDNA for 48 hrs and lysed. Equivalent amounts of cell lysates (5 ug per lane) were separated by SDS-PAGE and immunoblotted with anti-TAT (1:2000). Positive lysates LY424771 (100ug) and LC424771 (20ug) can be purchased separately from OriGene.