

## Product datasheet for **TA809918AM**

### Ceramide synthase 2 (CERS2) Mouse Monoclonal Antibody (Biotin conjugated) [Clone ID: OTI3D9]

#### Product data:

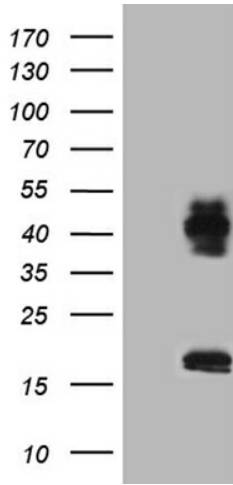
Product Type:	Primary Antibodies
Clone Name:	OTI3D9
Applications:	IHC, WB
Recommended Dilution:	WB 1:500~2000, IHC 1:1000
Reactivity:	Human, Mouse, Rat
Host:	Mouse
Isotype:	IgG2a
Clonality:	Monoclonal
Immunogen:	Human recombinant protein fragment corresponding to amino acids 62-136 of human CERS2(NP_859530) produced in E.coli.
Formulation:	PBS (pH 7.3) containing 1% BSA, 50% glycerol and 0.02% sodium azide.
Concentration:	0.5 mg/ml
Purification:	Purified from mouse ascites fluids or tissue culture supernatant by affinity chromatography (protein A/G)
Conjugation:	Biotin
Storage:	Store at -20°C as received.
Stability:	Stable for 12 months from date of receipt.
Predicted Protein Size:	44.7 kDa
Gene Name:	ceramide synthase 2
Database Link:	<a href="#">NP_859530</a> <a href="#">Entrez Gene 76893 MouseEntrez Gene 310667 RatEntrez Gene 29956 Human Q96G23</a>
Background:	This gene encodes a protein that has sequence similarity to yeast longevity assurance gene 1. Mutation or overexpression of the related gene in yeast has been shown to alter yeast lifespan. The human protein may play a role in the regulation of cell growth. Alternatively spliced transcript variants encoding the same protein have been described. [provided by RefSeq, Jul 2008]



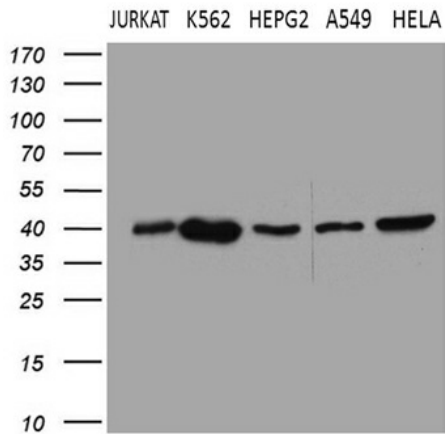
[View online »](#)

**Synonyms:** L3; LASS2; SP260; TMSG1  
**Protein Families:** Transcription Factors, Transmembrane

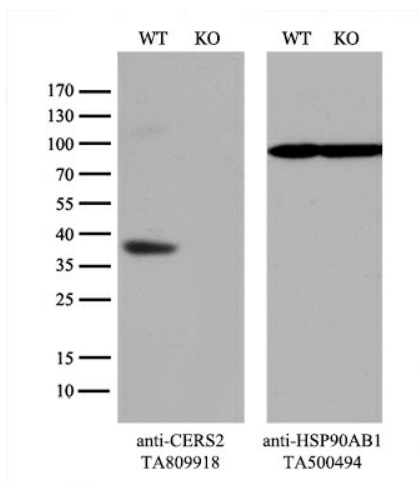
**Product images:**



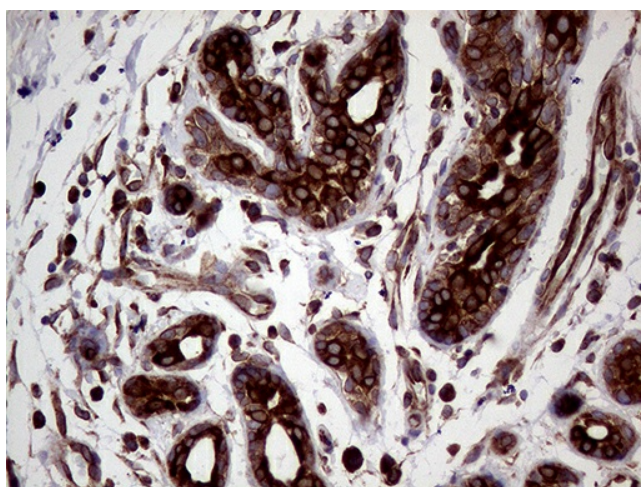
HEK293T cells were transfected with the pCMV6-ENTRY control (Cat# [PS100001], Left lane) or pCMV6-ENTRY CERS2 (Cat# [RC215300], Right lane) cDNA for 48 hrs and lysed. Equivalent amounts of cell lysates (5 ug per lane) were separated by SDS-PAGE and immunoblotted with anti-CERS2 (Cat# [TA809918])(1:2000). Positive lysates [LY405622] (100ug) and [LC405622] (20ug) can be purchased separately from OriGene.



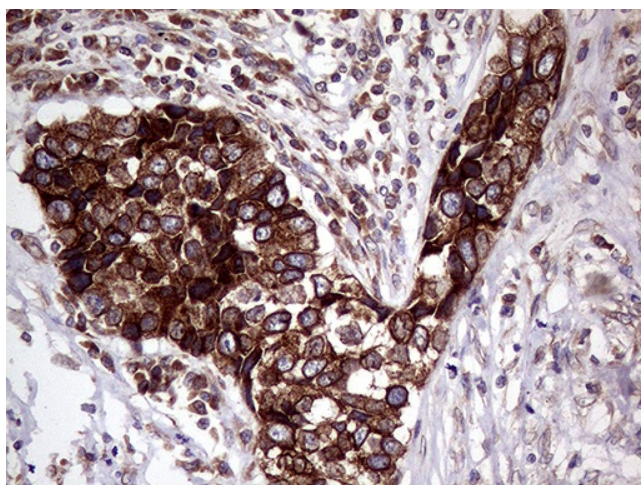
Western blot analysis of extracts (35ug) from 5 different cell lines by using anti-CERS2 monoclonal antibody (1:500).



Equivalent amounts of cell lysates (10 ug per lane) of wild-type 293T cells (WT, Cat# LC810293T) and CERS2-Knockout 293T cells (KO, Cat# [LC811503]) were separated by SDS-PAGE and immunoblotted with anti-CERS2 monoclonal antibody [TA809918], (1:500). Then the blotted membrane was stripped and reprobed with anti-HSP90AB1 antibody ([TA500494]) as a loading control.



Immunohistochemical staining of paraffin-embedded Human breast tissue within the normal limits using anti-CERS2 mouse monoclonal antibody. (Heat-induced epitope retrieval by 1mM EDTA in 10mM Tris buffer (pH8.5) at 120°C for 3min, [TA809918]) (1:1000)



Immunohistochemical staining of paraffin-embedded Carcinoma of Human lung tissue using anti-CERS2 mouse monoclonal antibody. (Heat-induced epitope retrieval by 1mM EDTA in 10mM Tris buffer (pH8.5) at 120°C for 3min, [TA809918]) (1:1000)