

## Product datasheet for **TA809917BM**

### Semaphorin 3D (SEMA3D) Mouse Monoclonal Antibody (HRP conjugated) [Clone ID: OTI2H4]

#### Product data:

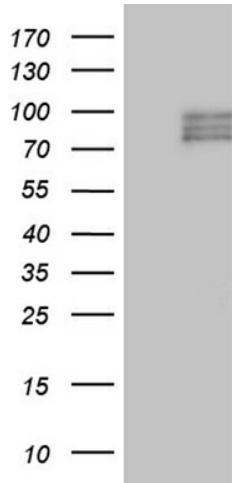
Product Type:	Primary Antibodies
Clone Name:	OTI2H4
Applications:	IHC, WB
Recommended Dilution:	WB 1:500, IHC 1:500
Reactivity:	Human, Mouse, Rat
Host:	Mouse
Isotype:	IgG1
Clonality:	Monoclonal
Immunogen:	Human recombinant protein fragment corresponding to amino acids 200-291 of human SEMA3D(NP_689967) produced in E.coli.
Formulation:	PBS (pH 7.3) containing 1% BSA, 50% glycerol.
Concentration:	0.5 mg/ml
Purification:	Purified from mouse ascites fluids or tissue culture supernatant by affinity chromatography (protein A/G)
Conjugation:	HRP
Storage:	Store at -20°C as received.
Stability:	Stable for 12 months from date of receipt.
Predicted Protein Size:	89.5 kDa
Gene Name:	semaphorin 3D
Database Link:	<a href="#">NP_689967</a> <a href="#">Entrez Gene 108151 Mouse</a> <a href="#">Entrez Gene 246262 Rat</a> <a href="#">Entrez Gene 223117 Human</a> <a href="#">O95025</a>
Background:	Induces the collapse and paralysis of neuronal growth cones. Could potentially act as repulsive cues toward specific neuronal populations. Binds to neuropilin. [UniProtKB/Swiss-Prot Function]
Synonyms:	coll-2; Sema-Z2
Protein Families:	Transmembrane



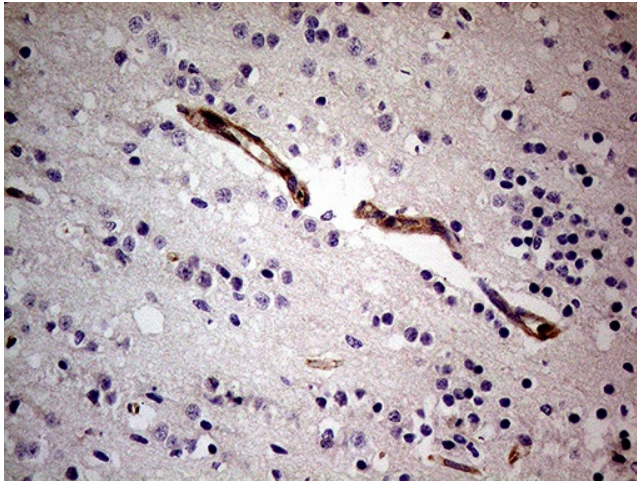
[View online »](#)

Protein Pathways: Axon guidance

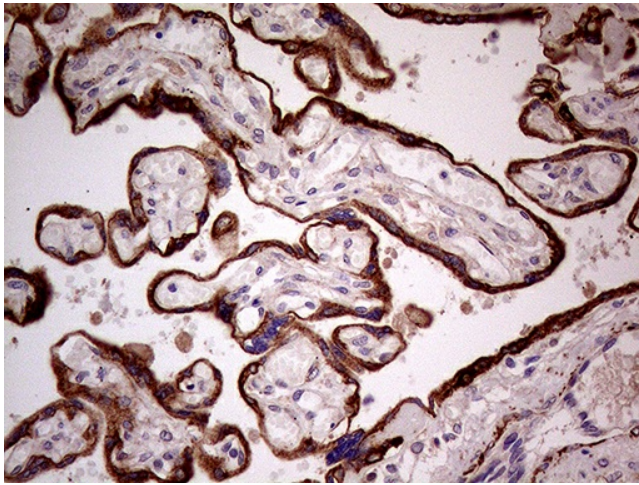
**Product images:**



HEK293T cells were transfected with the pCMV6-ENTRY control (Cat# [PS100001], Left lane) or pCMV6-ENTRY SEMA3D (Cat# [RC216032], Right lane) cDNA for 48 hrs and lysed. Equivalent amounts of cell lysates (5 ug per lane) were separated by SDS-PAGE and immunoblotted with anti-SEMA3D (Cat# [TA809917])(1:500). Positive lysates [LY407304] (100ug) and [LC407304] (20ug) can be purchased separately from OriGene.



Immunohistochemical staining of paraffin-embedded Human embryonic brain cortex tissue within the normal limits using anti-SEMA3D mouse monoclonal antibody. (Heat-induced epitope retrieval by 1mM EDTA in 10mM Tris buffer (pH8.5) at 120°C for 3min, [TA809917]) (1:500)



Immunohistochemical staining of paraffin-embedded Human placenta tissue within the normal limits using anti-SEMA3D mouse monoclonal antibody. (Heat-induced epitope retrieval by 1mM EDTA in 10mM Tris buffer (pH8.5) at 120°C for 3min, [TA809917]) (1:500)