

Product datasheet for **TA809901BM**

JIP1 (MAPK8IP1) Mouse Monoclonal Antibody (HRP conjugated) [Clone ID: OTI8H5]

Product data:

Product Type:	Primary Antibodies
Clone Name:	OTI8H5
Applications:	WB
Recommended Dilution:	WB 1:2000
Reactivity:	Human, Mouse, Rat
Host:	Mouse
Isotype:	IgG1
Clonality:	Monoclonal
Immunogen:	Full length human recombinant protein of human MAPK8IP1 (NP_005447) produced in HEK293T cell.
Formulation:	PBS (pH 7.3) containing 1% BSA, 50% glycerol.
Concentration:	0.5 mg/ml
Purification:	Purified from mouse ascites fluids or tissue culture supernatant by affinity chromatography (protein A/G)
Conjugation:	HRP
Storage:	Store at -20°C as received.
Stability:	Stable for 12 months from date of receipt.
Predicted Protein Size:	77.3 kDa
Gene Name:	mitogen-activated protein kinase 8 interacting protein 1
Database Link:	NP_005447 Entrez Gene 19099 Mouse Entrez Gene 116457 Rat Entrez Gene 9479 Human Q9UQF2



[View online »](#)

Background:

This gene encodes a regulator of the pancreatic beta-cell function. It is highly similar to JIP-1, a mouse protein known to be a regulator of c-Jun amino-terminal kinase (Mapk8). This protein has been shown to prevent MAPK8 mediated activation of transcription factors, and to decrease IL-1 beta and MAP kinase kinase 1 (MEKK1) induced apoptosis in pancreatic beta cells. This protein also functions as a DNA-binding transactivator of the glucose transporter GLUT2. RE1-silencing transcription factor (REST) is reported to repress the expression of this gene in insulin-secreting beta cells. This gene is found to be mutated in a type 2 diabetes family, and thus is thought to be a susceptibility gene for type 2 diabetes. [provided by RefSeq, May 2011]

Synonyms:

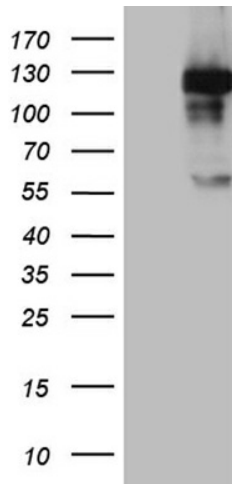
IB1; JIP-1; JIP1; PRKM8IP

Protein Families:

Druggable Genome

Protein Pathways:

MAPK signaling pathway

Product images:

HEK293T cells were transfected with the pCMV6-ENTRY control (Left lane) or pCMV6-ENTRY MAPK8IP1 ([RC209734], Right lane) cDNA for 48 hrs and lysed. Equivalent amounts of cell lysates (5 ug per lane) were separated by SDS-PAGE and immunoblotted with anti-MAPK8IP1 (1:2000). Positive lysates [LY417296] (100ug) and [LC417296] (20ug) can be purchased separately from OriGene.