

## Product datasheet for **TA809901AM**

### **JIP1 (MAPK8IP1) Mouse Monoclonal Antibody (Biotin conjugated) [Clone ID: OTI8H5]**

#### **Product data:**

<b>Product Type:</b>	Primary Antibodies
<b>Clone Name:</b>	OTI8H5
<b>Applications:</b>	WB
<b>Recommended Dilution:</b>	WB 1:2000
<b>Reactivity:</b>	Human, Mouse, Rat
<b>Host:</b>	Mouse
<b>Isotype:</b>	IgG1
<b>Clonality:</b>	Monoclonal
<b>Immunogen:</b>	Full length human recombinant protein of human MAPK8IP1 (NP_005447) produced in HEK293T cell.
<b>Formulation:</b>	PBS (pH 7.3) containing 1% BSA, 50% glycerol and 0.02% sodium azide.
<b>Concentration:</b>	0.5 mg/ml
<b>Purification:</b>	Purified from mouse ascites fluids or tissue culture supernatant by affinity chromatography (protein A/G)
<b>Conjugation:</b>	Biotin
<b>Storage:</b>	Store at -20°C as received.
<b>Stability:</b>	Stable for 12 months from date of receipt.
<b>Predicted Protein Size:</b>	77.3 kDa
<b>Gene Name:</b>	mitogen-activated protein kinase 8 interacting protein 1
<b>Database Link:</b>	<a href="#">NP_005447</a> <a href="#">Entrez Gene 19099 Mouse</a> <a href="#">Entrez Gene 116457 Rat</a> <a href="#">Entrez Gene 9479 Human</a> <a href="#">Q9UQF2</a>



[View online »](#)

**Background:**

This gene encodes a regulator of the pancreatic beta-cell function. It is highly similar to JIP-1, a mouse protein known to be a regulator of c-Jun amino-terminal kinase (Mapk8). This protein has been shown to prevent MAPK8 mediated activation of transcription factors, and to decrease IL-1 beta and MAP kinase kinase 1 (MEKK1) induced apoptosis in pancreatic beta cells. This protein also functions as a DNA-binding transactivator of the glucose transporter GLUT2. RE1-silencing transcription factor (REST) is reported to repress the expression of this gene in insulin-secreting beta cells. This gene is found to be mutated in a type 2 diabetes family, and thus is thought to be a susceptibility gene for type 2 diabetes. [provided by RefSeq, May 2011]

**Synonyms:**

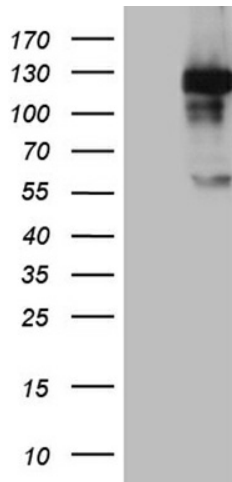
IB1; JIP-1; JIP1; PRKM8IP

**Protein Families:**

Druggable Genome

**Protein Pathways:**

MAPK signaling pathway

**Product images:**

HEK293T cells were transfected with the pCMV6-ENTRY control (Left lane) or pCMV6-ENTRY MAPK8IP1 ([RC209734], Right lane) cDNA for 48 hrs and lysed. Equivalent amounts of cell lysates (5 ug per lane) were separated by SDS-PAGE and immunoblotted with anti-MAPK8IP1 (1:2000). Positive lysates [LY417296] (100ug) and [LC417296] (20ug) can be purchased separately from OriGene.