

Product datasheet for **TA809898BM**

RSK3 (RPS6KA2) Mouse Monoclonal Antibody (HRP conjugated) [Clone ID: OTI2H10]

Product data:

Product Type:	Primary Antibodies
Clone Name:	OTI2H10
Applications:	WB
Recommended Dilution:	WB 1:2000
Reactivity:	Human, Mouse, Rat
Host:	Mouse
Isotype:	IgG1
Clonality:	Monoclonal
Immunogen:	Human recombinant protein fragment corresponding to amino acids 1-51 of human RPS6KA2(NP_066958) produced in E.coli.
Formulation:	PBS (pH 7.3) containing 1% BSA, 50% glycerol.
Concentration:	0.5 mg/ml
Purification:	Purified from mouse ascites fluids or tissue culture supernatant by affinity chromatography (protein A/G)
Conjugation:	HRP
Storage:	Store at -20°C as received.
Stability:	Stable for 12 months from date of receipt.
Predicted Protein Size:	83.1 kDa
Gene Name:	ribosomal protein S6 kinase A2
Database Link:	NP_066958 Entrez Gene 20112 Mouse Entrez Gene 117269 Rat Entrez Gene 6196 Human Q15349
Background:	This gene encodes a member of the RSK (ribosomal S6 kinase) family of serine/threonine kinases. This kinase contains 2 non-identical kinase catalytic domains and phosphorylates various substrates, including members of the mitogen-activated kinase (MAPK) signalling pathway. The activity of this protein has been implicated in controlling cell growth and differentiation. Alternate transcriptional splice variants, encoding different isoforms, have been characterized. [provided by RefSeq, Jul 2008]



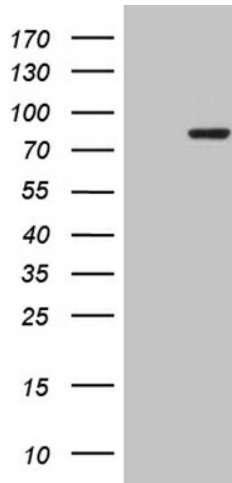
[View online »](#)

Synonyms: HU-2; MAPKAPK1C; p90-RSK3; p90RSK2; pp90RSK3; RSK; RSK3; S6K-alpha; S6K-alpha2

Protein Families: Druggable Genome, Protein Kinase

Protein Pathways: Long-term potentiation, MAPK signaling pathway, mTOR signaling pathway, Neurotrophin signaling pathway, Oocyte meiosis, Progesterone-mediated oocyte maturation

Product images:



HEK293T cells were transfected with the pCMV6-ENTRY control (Left lane) or pCMV6-ENTRY RPS6KA2 ([RC201835], Right lane) cDNA for 48 hrs and lysed. Equivalent amounts of cell lysates (5 ug per lane) were separated by SDS-PAGE and immunoblotted with anti-RPS6KA2 (1:2000). Positive lysates [LY402841] (100ug) and [LC402841] (20ug) can be purchased separately from OriGene.