

## Product datasheet for **TA809897AM**

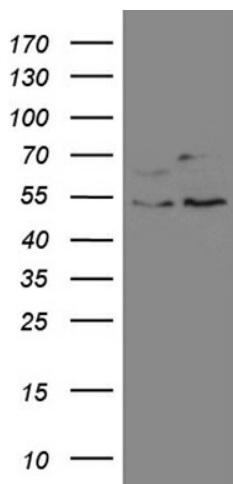
### SS18 Mouse Monoclonal Antibody (Biotin conjugated) [Clone ID: OTI4F11]

#### Product data:

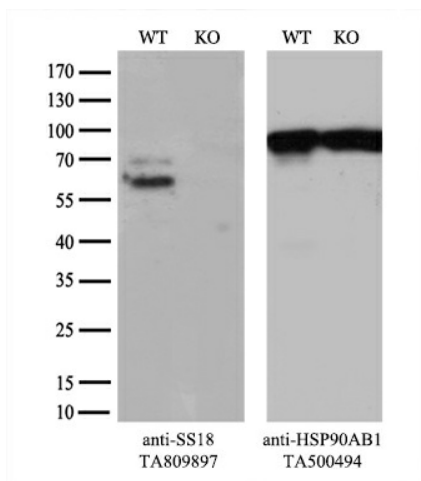
Product Type:	Primary Antibodies
Clone Name:	OTI4F11
Applications:	WB
Recommended Dilution:	WB 1:2000
Reactivity:	Human, Mouse, Rat
Host:	Mouse
Isotype:	IgG1
Clonality:	Monoclonal
Immunogen:	Human recombinant protein fragment corresponding to amino acids 227-255 of human SS18(NP_001007560) produced in E.coli.
Formulation:	PBS (pH 7.3) containing 1% BSA, 50% glycerol and 0.02% sodium azide.
Concentration:	0.5 mg/ml
Purification:	Purified from mouse ascites fluids or tissue culture supernatant by affinity chromatography (protein A/G)
Conjugation:	Biotin
Storage:	Store at -20°C as received.
Stability:	Stable for 12 months from date of receipt.
Predicted Protein Size:	45.7 kDa
Gene Name:	SS18, nBAF chromatin remodeling complex subunit
Database Link:	<a href="#">NP_001007560</a> <a href="#">Entrez Gene 268996 Mouse</a> <a href="#">Entrez Gene 361295 Rat</a> <a href="#">Entrez Gene 6760 Human Q15532</a>
Synonyms:	SSXT; SYT
Protein Families:	Druggable Genome



[View online »](#)

**Product images:**


HEK293T cells were transfected with the pCMV6-ENTRY control (Cat# [PS100001], Left lane) or pCMV6-ENTRY SS18 (Cat# [RC219498], Right lane) cDNA for 48 hrs and lysed. Equivalent amounts of cell lysates (5 ug per lane) were separated by SDS-PAGE and immunoblotted with anti-SS18 (Cat# [TA809897])(1:2000). Positive lysates [LY423511] (100ug) and [LC423511] (20ug) can be purchased separately from OriGene.



Equivalent amounts of cell lysates (10 ug per lane) of wild-type HeLa cells (WT, Cat# LC810HELA) and SS18-Knockout HeLa cells (KO, Cat# [LC833027]) were separated by SDS-PAGE and immunoblotted with anti-SS18 monoclonal antibody [TA809897] (1:100). Then the blotted membrane was stripped and reprobed with anti-HSP90 antibody as a loading control.