

Product datasheet for **TA809887**

Cryptochrome I (CRY1) Mouse Monoclonal Antibody [Clone ID: OTI2F5]

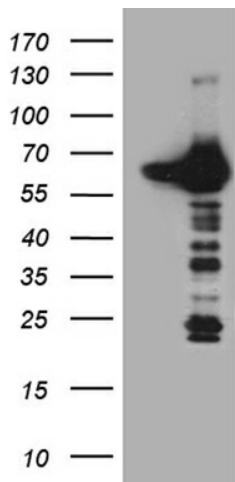
Product data:

Product Type:	Primary Antibodies
Clone Name:	OTI2F5
Applications:	WB
Recommend Dilution:	WB 1:2000
Reactivity:	Human
Host:	Mouse
Isotype:	IgG2b
Clonality:	Monoclonal
Immunogen:	Human recombinant protein fragment corresponding to amino acids 502-584 of human CRY1(NP_004066) produced in E.coli.
Formulation:	PBS (PH 7.3) containing 1% BSA, 50% glycerol and 0.02% sodium azide.
Concentration:	1 mg/ml
Purification:	Purified from cell culture supernatant by affinity chromatography
Predicted Protein Size:	66.2 kDa
Gene Name:	cryptochrome circadian clock 1
Database Link:	NP_004066 Entrez Gene 1407 Human
Background:	This gene encodes a flavin adenine dinucleotide-binding protein that is a key component of the circadian core oscillator complex, which regulates the circadian clock. This gene is upregulated by CLOCK/ARNTL heterodimers but then represses this upregulation in a feedback loop using PER/CRY heterodimers to interact with CLOCK/ARNTL. Polymorphisms in this gene have been associated with altered sleep patterns. The encoded protein is widely conserved across plants and animals. Loss of the related gene in mouse results in a shortened circadian cycle in complete darkness. [provided by RefSeq, Jan 2014]
Synonyms:	PHLL1
Protein Families:	Druggable Genome
Protein Pathways:	Circadian rhythm - mammal

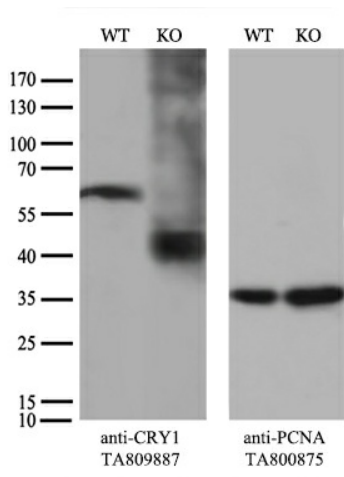


[View online »](#)

Product images:



HEK293T cells were transfected with the pCMV6-ENTRY control (Left lane) or pCMV6-ENTRY CRY1 (RC207152, Right lane) cDNA for 48 hrs and lysed. Equivalent amounts of cell lysates (5 ug per lane) were separated by SDS-PAGE and immunoblotted with anti-CRY1 (1:2000). Positive lysates LY418241 (100ug) and LC418241 (20ug) can be purchased separately from OriGene.



Equivalent amounts of cell lysates (10 ug per lane) of wild-type HeLa cells (WT, Cat# LC810HELA) and CRY1-Knockout HeLa cells (KO, Cat#LC834622) were separated by SDS-PAGE and immunoblotted with anti-CRY1 monoclonal antibody TA809887 (1:200). Then the blotted membrane was stripped and reprobed with anti-PCNA antibody as a loading control.