

## Product datasheet for **TA809886M**

### Cryptochrome I (CRY1) Mouse Monoclonal Antibody [Clone ID: OTI2C10]

#### Product data:

Product Type:	Primary Antibodies
Clone Name:	OTI2C10
Applications:	WB
Recommended Dilution:	WB 1:2000
Reactivity:	Human, Mouse, Rat
Host:	Mouse
Isotype:	IgG2b
Clonality:	Monoclonal
Immunogen:	Human recombinant protein fragment corresponding to amino acids 502-584 of human CRY1(NP_004066) produced in E.coli.
Formulation:	PBS (pH 7.3) containing 1% BSA, 50% glycerol and 0.02% sodium azide.
Concentration:	1 mg/ml
Purification:	Purified from mouse ascites fluids or tissue culture supernatant by affinity chromatography (protein A/G)
Conjugation:	Unconjugated
Storage:	Store at -20°C as received.
Stability:	Stable for 12 months from date of receipt.
Predicted Protein Size:	66.2 kDa
Gene Name:	cryptochrome circadian clock 1
Database Link:	<a href="#">NP_004066</a> <a href="#">Entrez Gene 12952 Mouse</a> <a href="#">Entrez Gene 299691 Rat</a> <a href="#">Entrez Gene 1407 Human</a> <a href="#">Q16526</a>



[View online »](#)

**Background:**

This gene encodes a flavin adenine dinucleotide-binding protein that is a key component of the circadian core oscillator complex, which regulates the circadian clock. This gene is upregulated by CLOCK/ARNTL heterodimers but then represses this upregulation in a feedback loop using PER/CRY heterodimers to interact with CLOCK/ARNTL. Polymorphisms in this gene have been associated with altered sleep patterns. The encoded protein is widely conserved across plants and animals. Loss of the related gene in mouse results in a shortened circadian cycle in complete darkness. [provided by RefSeq, Jan 2014]

**Synonyms:**

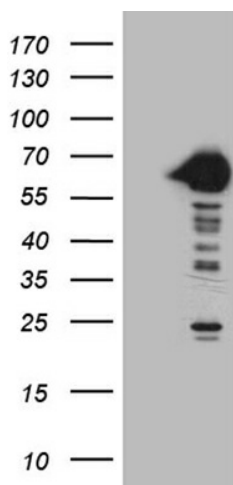
PHLL1

**Protein Families:**

Druggable Genome

**Protein Pathways:**

Circadian rhythm - mammal

**Product images:**


HEK293T cells were transfected with the pCMV6-ENTRY control (Left lane) or pCMV6-ENTRY CRY1 ([RC207152], Right lane) cDNA for 48 hrs and lysed. Equivalent amounts of cell lysates (5 ug per lane) were separated by SDS-PAGE and immunoblotted with anti-CRY1 (1:2000). Positive lysates [LY418241] (100ug) and [LC418241] (20ug) can be purchased separately from OriGene.