

## Product datasheet for **TA809864**

### CLCA1 Mouse Monoclonal Antibody [Clone ID: OTI8E7]

#### Product data:

Product Type:	Primary Antibodies
Clone Name:	OTI8E7
Applications:	IHC, WB
Recommended Dilution:	WB 1:2000, IHC 1:500
Reactivity:	Human
Host:	Mouse
Isotype:	IgG1
Clonality:	Monoclonal
Immunogen:	Human recombinant protein fragment corresponding to amino acids 344-412 of human CLCA1(NP_001276) produced in E.coli.
Formulation:	PBS (pH 7.3) containing 1% BSA, 50% glycerol and 0.02% sodium azide.
Concentration:	1 mg/ml
Purification:	Purified from mouse ascites fluids or tissue culture supernatant by affinity chromatography (protein A/G)
Conjugation:	Unconjugated
Storage:	Store at -20°C as received.
Stability:	Stable for 12 months from date of receipt.
Gene Name:	chloride channel accessory 1
Database Link:	<a href="#">NP_001276</a> <a href="#">Entrez Gene 1179 Human</a> <a href="#">A8K7I4</a>



[View online »](#)

**Background:**

This gene encodes a member of the calcium sensitive chloride conductance protein family. To date, all members of this gene family map to the same region on chromosome 1p31-p22 and share a high degree of homology in size, sequence, and predicted structure, but differ significantly in their tissue distributions. The encoded protein is expressed as a precursor protein that is processed into two cell-surface-associated subunits, although the site at which the precursor is cleaved has not been precisely determined. The encoded protein may be involved in mediating calcium-activated chloride conductance in the intestine. [provided by RefSeq, Jul 2008]

**Synonyms:**

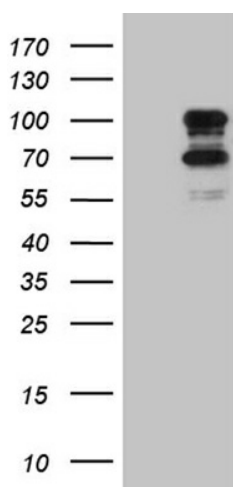
CACC; CaCC-1; CACC1; CLCRG1; GOB5; hCaCC-1; hCLCA1

**Protein Families:**

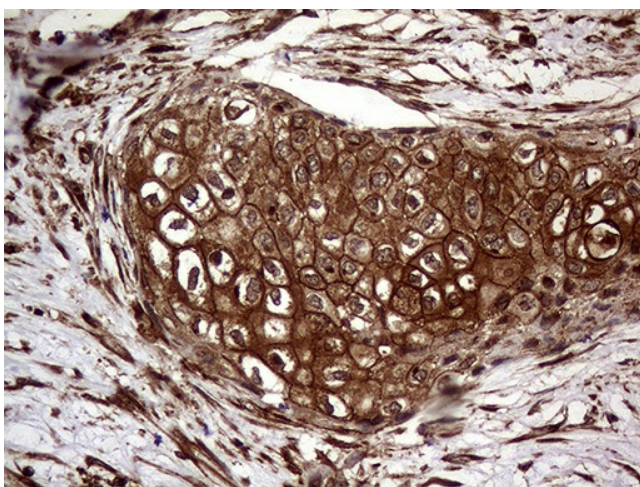
Druggable Genome, Ion Channels: Other

**Protein Pathways:**

Olfactory transduction

**Product images:**

HEK293T cells were transfected with the pCMV6-ENTRY control (Cat# [PS100001], Left lane) or pCMV6-ENTRY CLCA1 (Cat# [RC218583], Right lane) cDNA for 48 hrs and lysed. Equivalent amounts of cell lysates (5 ug per lane) were separated by SDS-PAGE and immunoblotted with anti-CLCA1 (Cat# TA809864)(1:2000).



Immunohistochemical staining of paraffin-embedded Carcinoma of Human bladder tissue using anti-CLCA1 mouse monoclonal antibody. (Heat-induced epitope retrieval by 1mM EDTA in 10mM Tris buffer (pH8.5) at 120°C for 3min, TA809864) (1:500)