

## Product datasheet for **TA809854AM**

### USP40 Mouse Monoclonal Antibody (Biotin conjugated) [Clone ID: OTI1B1]

#### Product data:

Product Type:	Primary Antibodies
Clone Name:	OTI1B1
Applications:	WB
Recommended Dilution:	WB 1:500
Reactivity:	Human
Host:	Mouse
Isotype:	IgG2a
Clonality:	Monoclonal
Immunogen:	Human recombinant protein fragment corresponding to amino acids 767-912 of human USP40(NP_060688) produced in E.coli.
Formulation:	PBS (pH 7.3) containing 1% BSA, 50% glycerol and 0.02% sodium azide.
Concentration:	0.5 mg/ml
Purification:	Purified from mouse ascites fluids or tissue culture supernatant by affinity chromatography (protein A/G)
Conjugation:	Biotin
Storage:	Store at -20°C as received.
Stability:	Stable for 12 months from date of receipt.
Predicted Protein Size:	141.4 kDa
Gene Name:	ubiquitin specific peptidase 40
Database Link:	<a href="#">NP_060688</a> <a href="#">Entrez Gene 55230 Human</a> <a href="#">Q9NVE5</a>



[View online »](#)

**Background:**

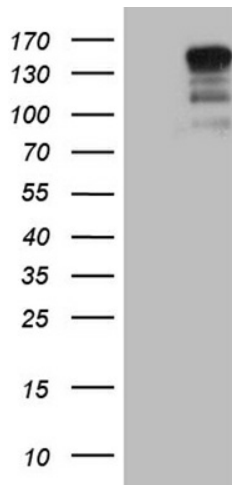
Modification of cellular proteins by ubiquitin is an essential regulatory mechanism controlled by the coordinated action of multiple ubiquitin-conjugating and deubiquitinating enzymes. USP40 belongs to a large family of cysteine proteases that function as deubiquitinating enzymes (Quesada et al., 2004 [PubMed 14715245]). [supplied by OMIM, Mar 2008].  
##Evidence-Data-START## Transcript exon combination :: AJ583821.2 [ECO:0000332] RNAseq introns :: mixed/partial sample support ERS025081, ERS025082 [ECO:0000350] ##Evidence-Data-END## COMPLETENESS: complete on the 3' end.

**Synonyms:**

FLJ10785; FLJ42100

**Protein Families:**

Protease

**Product images:**

HEK293T cells were transfected with the pCMV6-ENTRY control (Left lane) or pCMV6-ENTRY USP40 ([RC219120], Right lane) cDNA for 48 hrs and lysed. Equivalent amounts of cell lysates (5 ug per lane) were separated by SDS-PAGE and immunoblotted with anti-USP40 (1:500). Positive lysates [LY413199] (100ug) and [LC413199] (20ug) can be purchased separately from OriGene.