

## Product datasheet for **TA809840BM**

### CBR1 Mouse Monoclonal Antibody (HRP conjugated) [Clone ID: OTI4B4]

#### Product data:

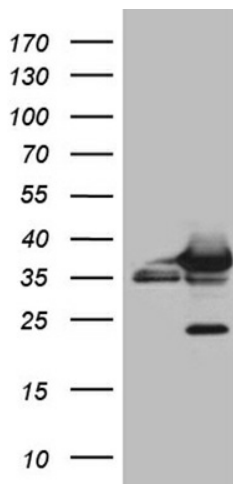
Product Type:	Primary Antibodies
Clone Name:	OTI4B4
Applications:	IHC, WB
Recommended Dilution:	WB 1:500~2000, IHC 1:2000
Reactivity:	Human, Mouse, Rat
Host:	Mouse
Isotype:	IgG1
Clonality:	Monoclonal
Immunogen:	Full length human recombinant protein of human CBR1 (NP_001748) produced in HEK293T cell.
Formulation:	PBS (pH 7.3) containing 1% BSA, 50% glycerol.
Concentration:	0.5 mg/ml
Purification:	Purified from mouse ascites fluids or tissue culture supernatant by affinity chromatography (protein A/G)
Conjugation:	HRP
Storage:	Store at -20°C as received.
Stability:	Stable for 12 months from date of receipt.
Predicted Protein Size:	30.2 kDa
Gene Name:	carbonyl reductase 1
Database Link:	<a href="#">NP_001748</a> <a href="#">Entrez Gene 12408 Mouse</a> <a href="#">Entrez Gene 29224 Rat</a> <a href="#">Entrez Gene 873 Human</a> <a href="#">P16152</a>
Background:	The protein encoded by this gene belongs to the short-chain dehydrogenases/reductases (SDR) family, which function as NADPH-dependent oxidoreductases having wide specificity for carbonyl compounds, such as quinones, prostaglandins, and various xenobiotics. Alternatively spliced transcript variants have been found for this gene. [provided by RefSeq, Nov 2013]



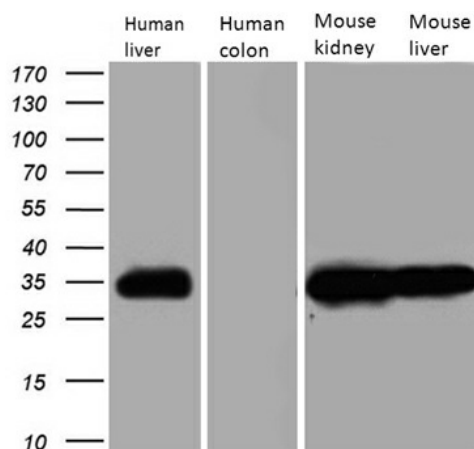
[View online »](#)

**Synonyms:** CBR; hCBR1; SDR21C1  
**Protein Families:** Druggable Genome  
**Protein Pathways:** Arachidonic acid metabolism, Metabolic pathways

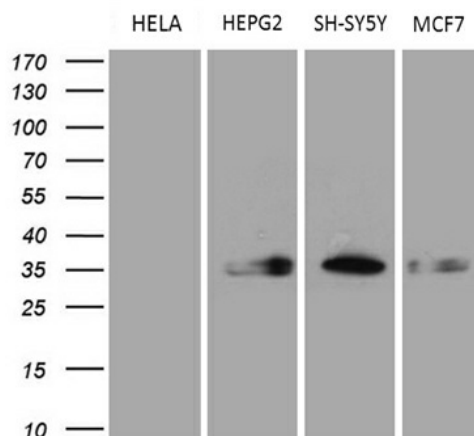
**Product images:**



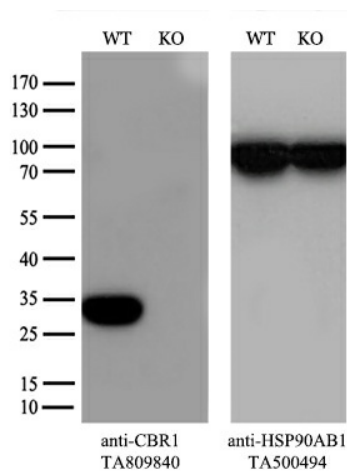
HEK293T cells were transfected with the pCMV6-ENTRY control (Cat# [PS100001], Left lane) or pCMV6-ENTRY CBR1 (Cat# [RC204950], Right lane) cDNA for 48 hrs and lysed. Equivalent amounts of cell lysates (5 ug per lane) were separated by SDS-PAGE and immunoblotted with anti-CBR1 (Cat# [TA809840])(1:2000). Positive lysates [LY400669] (100ug) and [LC400669] (20ug) can be purchased separately from OriGene.



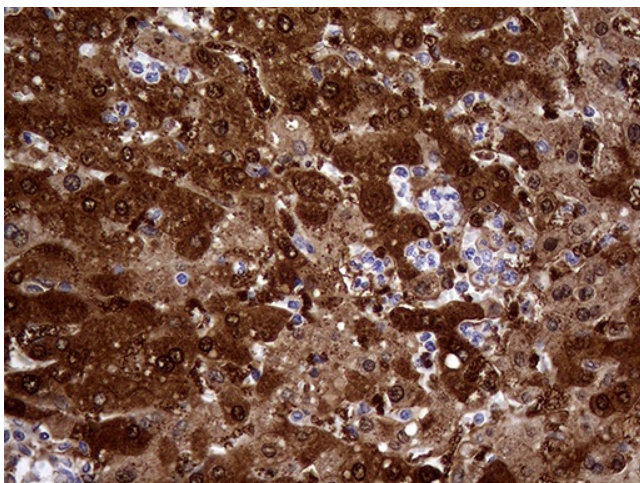
Western blot analysis of extracts (35ug) from 4 different tissue lysates by using anti-CBR1 monoclonal antibody (1:500).



Western blot analysis of extracts (35ug) from 4 different cell lines by using anti-CBR1 monoclonal antibody (1:500).



Equivalent amounts of cell lysates (10 ug per lane) of wild-type A549 cells and CBR1-Knockout A549 cells (KO, Cat# [LC800036]) were separated by SDS-PAGE and immunoblotted with anti-CBR1 monoclonal antibody [TA809840] (1:500). Then the blotted membrane was stripped and reprobed with anti-HSP90 antibody as a loading control.



Immunohistochemical staining of paraffin-embedded Carcinoma of Human liver tissue using anti-CBR1 mouse monoclonal antibody. (Heat-induced epitope retrieval by 1mM EDTA in 10mM Tris buffer (pH8.5) at 120°C for 3min, [TA809840]) (1:2000)