

## Product datasheet for **TA809840AM**

### CBR1 Mouse Monoclonal Antibody (Biotin conjugated) [Clone ID: OTI4B4]

#### Product data:

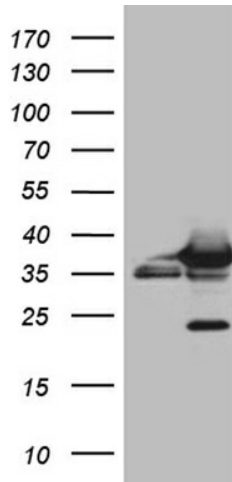
|                         |  |
|-------------------------|--|
| Product Type:           | Primary Antibodies   |
| Clone Name:             | OTI4B4   |
| Applications:           | IHC, WB  |
| Recommended Dilution:   | WB 1:500~2000, IHC 1:2000  |
| Reactivity:             | Human, Mouse, Rat  |
| Host:                   | Mouse  |
| Isotype:                | IgG1   |
| Clonality:              | Monoclonal   |
| Immunogen:              | Full length human recombinant protein of human CBR1 (NP_001748) produced in HEK293T cell.  |
| Formulation:            | PBS (pH 7.3) containing 1% BSA, 50% glycerol and 0.02% sodium azide.   |
| Concentration:          | 0.5 mg/ml  |
| Purification:           | Purified from mouse ascites fluids or tissue culture supernatant by affinity chromatography (protein A/G)  |
| Conjugation:            | Biotin   |
| Storage:                | Store at -20°C as received.  |
| Stability:              | Stable for 12 months from date of receipt.   |
| Predicted Protein Size: | 30.2 kDa   |
| Gene Name:              | carbonyl reductase 1   |
| Database Link:          | <a href="#">NP_001748</a><br><a href="#">Entrez Gene 12408 Mouse</a> <a href="#">Entrez Gene 29224 Rat</a> <a href="#">Entrez Gene 873 Human</a><br><a href="#">P16152</a>   |
| Background:             | The protein encoded by this gene belongs to the short-chain dehydrogenases/reductases (SDR) family, which function as NADPH-dependent oxidoreductases having wide specificity for carbonyl compounds, such as quinones, prostaglandins, and various xenobiotics. Alternatively spliced transcript variants have been found for this gene. [provided by RefSeq, Nov 2013] |



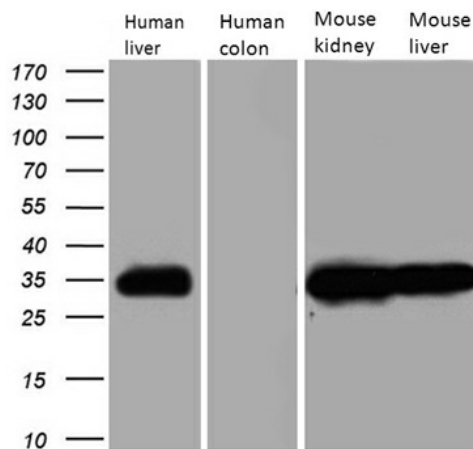
[View online »](#)

**Synonyms:** CBR; hCBR1; SDR21C1  
**Protein Families:** Druggable Genome  
**Protein Pathways:** Arachidonic acid metabolism, Metabolic pathways

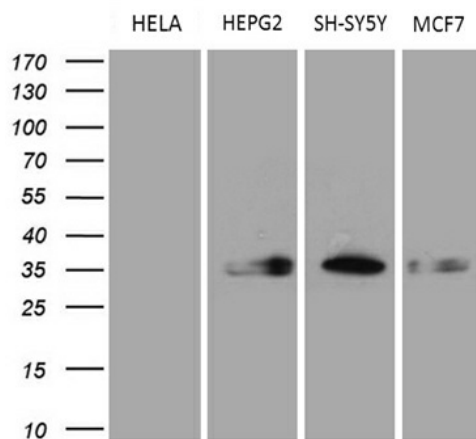
**Product images:**



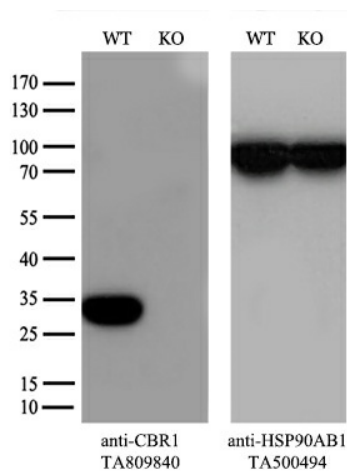
HEK293T cells were transfected with the pCMV6-ENTRY control (Cat# [PS100001], Left lane) or pCMV6-ENTRY CBR1 (Cat# [RC204950], Right lane) cDNA for 48 hrs and lysed. Equivalent amounts of cell lysates (5 ug per lane) were separated by SDS-PAGE and immunoblotted with anti-CBR1 (Cat# [TA809840])(1:2000). Positive lysates [LY400669] (100ug) and [LC400669] (20ug) can be purchased separately from OriGene.



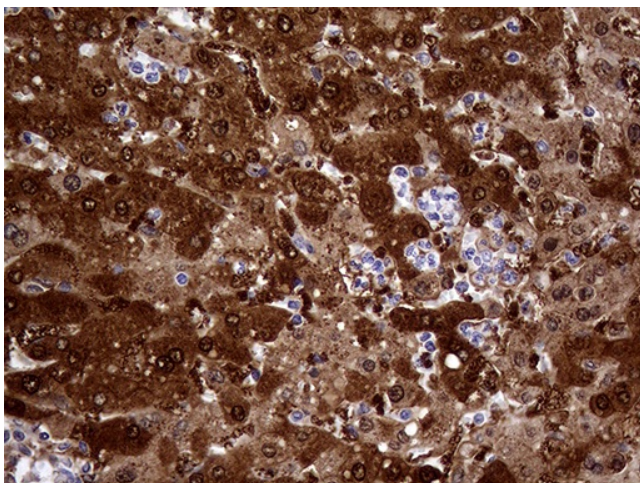
Western blot analysis of extracts (35ug) from 4 different tissue lysates by using anti-CBR1 monoclonal antibody (1:500).



Western blot analysis of extracts (35ug) from 4 different cell lines by using anti-CBR1 monoclonal antibody (1:500).



Equivalent amounts of cell lysates (10 ug per lane) of wild-type A549 cells and CBR1-Knockout A549 cells (KO, Cat# [LC800036]) were separated by SDS-PAGE and immunoblotted with anti-CBR1 monoclonal antibody [TA809840] (1:500). Then the blotted membrane was stripped and reprobed with anti-HSP90 antibody as a loading control.



Immunohistochemical staining of paraffin-embedded Carcinoma of Human liver tissue using anti-CBR1 mouse monoclonal antibody. (Heat-induced epitope retrieval by 1mM EDTA in 10mM Tris buffer (pH8.5) at 120°C for 3min, [TA809840]) (1:2000)