

Product datasheet for **TA809837S**

USP40 Mouse Monoclonal Antibody [Clone ID: OTI2C5]

Product data:

Product Type:	Primary Antibodies
Clone Name:	OTI2C5
Applications:	IHC, WB
Recommended Dilution:	WB 1:500~2000, IHC 1:500
Reactivity:	Human
Host:	Mouse
Isotype:	IgG1
Clonality:	Monoclonal
Immunogen:	Human recombinant protein fragment corresponding to amino acids 767-912 of human USP40 (NP_060688) produced in E.coli.
Formulation:	PBS (pH 7.3) containing 1% BSA, 50% glycerol and 0.02% sodium azide.
Concentration:	1 mg/ml
Purification:	Purified from mouse ascites fluids or tissue culture supernatant by affinity chromatography (protein A/G)
Conjugation:	Unconjugated
Storage:	Store at -20°C as received.
Stability:	Stable for 12 months from date of receipt.
Gene Name:	ubiquitin specific peptidase 40
Database Link:	NP_060688 Entrez Gene 55230 Human Q9NVE5
Background:	Modification of cellular proteins by ubiquitin is an essential regulatory mechanism controlled by the coordinated action of multiple ubiquitin-conjugating and deubiquitinating enzymes. USP40 belongs to a large family of cysteine proteases that function as deubiquitinating enzymes (Quesada et al., 2004 [PubMed 14715245]). [supplied by OMIM, Mar 2008]. ##Evidence-Data-START## Transcript exon combination :: AJ583821.2 [ECO:0000332] RNAseq introns :: mixed/partial sample support ERS025081, ERS025082 [ECO:0000350] ##Evidence-Data-END## COMPLETENESS: complete on the 3' end.

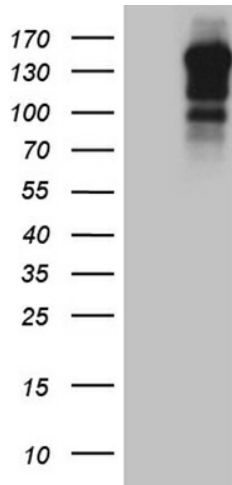


[View online »](#)

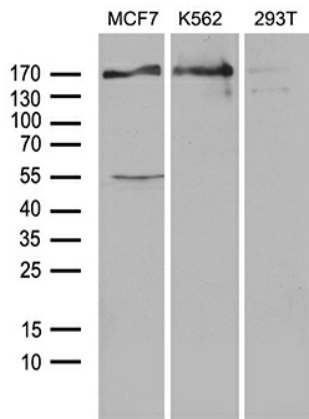
Synonyms: FLJ10785; FLJ42100

Protein Families: Protease

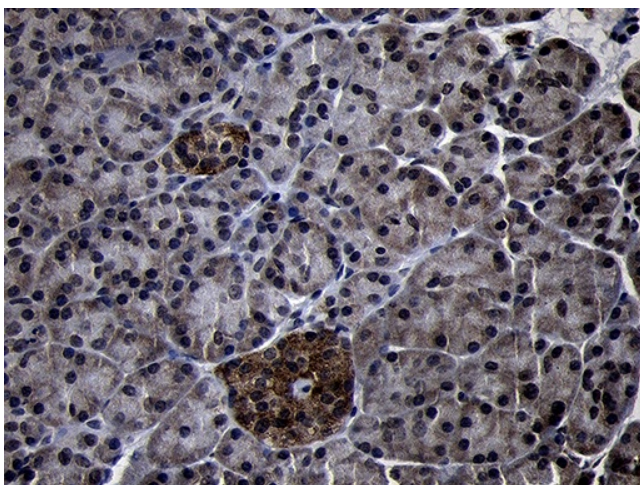
Product images:



HEK293T cells were transfected with the pCMV6-ENTRY control (Cat# [PS100001], Left lane) or pCMV6-ENTRY USP40 (Cat# [RC219120], Right lane) cDNA for 48 hrs and lysed. Equivalent amounts of cell lysates (5 ug per lane) were separated by SDS-PAGE and immunoblotted with anti-USP40 (Cat# [TA809837])(1:2000). Positive lysates [LY413199] (100ug) and [LC413199] (20ug) can be purchased separately from OriGene.



Western blot analysis of extracts (35ug) from 3 different cell lines by using anti-USP40 monoclonal antibody (1:500).



Immunohistochemical staining of paraffin-embedded Human pancreas tissue within the normal limits using anti-USP40 mouse monoclonal antibody. (Heat-induced epitope retrieval by 1mM EDTA in 10mM Tris buffer (pH8.5) at 120°C for 3min, [TA809837]) (1:500)