

Product datasheet for **TA809829S**

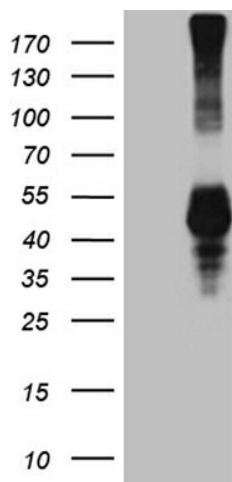
CD161 (KLRB1) Mouse Monoclonal Antibody [Clone ID: OTI5F10]

Product data:

Product Type:	Primary Antibodies
Clone Name:	OTI5F10
Applications:	WB
Recommended Dilution:	WB 1:2000
Reactivity:	Human
Host:	Mouse
Isotype:	IgG1
Clonality:	Monoclonal
Immunogen:	Human recombinant protein fragment corresponding to amino acids 67-225 of human KLRB1 (NP_002249) produced in E.coli.
Formulation:	PBS (pH 7.3) containing 1% BSA, 50% glycerol and 0.02% sodium azide.
Concentration:	1 mg/ml
Purification:	Purified from mouse ascites fluids or tissue culture supernatant by affinity chromatography (protein A/G)
Conjugation:	Unconjugated
Storage:	Store at -20°C as received.
Stability:	Stable for 12 months from date of receipt.
Predicted Protein Size:	25.2 kDa
Gene Name:	killer cell lectin like receptor B1
Database Link:	NP_002249 Entrez Gene 3820 Human Q12918
Synonyms:	CD161; CLEC5B; hNKR-P1A; NKR; NKR-P1; NKR-P1A; NKRP1A
Protein Families:	Transmembrane



[View online »](#)

Product images:

HEK293T cells were transfected with the pCMV6-ENTRY control (Left lane) or pCMV6-ENTRY KLRB1 ([RC216459], Right lane) cDNA for 48 hrs and lysed. Equivalent amounts of cell lysates (5 ug per lane) were separated by SDS-PAGE and immunoblotted with anti-KLRB1 (1:2000). Positive lysates [LY419438] (100ug) and [LC419438] (20ug) can be purchased separately from OriGene.