

## Product datasheet for **TA809817M**

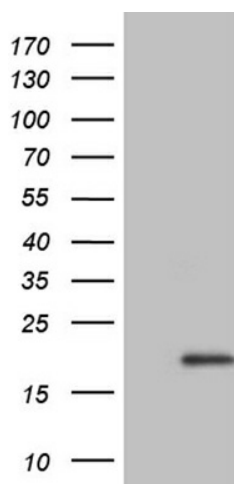
### AGR2 Mouse Monoclonal Antibody [Clone ID: OTI2D11]

#### Product data:

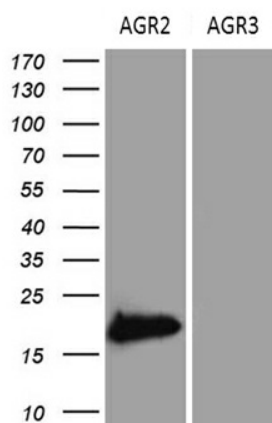
Product Type:	Primary Antibodies
Clone Name:	OTI2D11
Applications:	IHC, WB
Recommended Dilution:	WB 1:500~2000, IHC 1:500
Reactivity:	Human, Mouse, Rat
Host:	Mouse
Isotype:	IgG1
Clonality:	Monoclonal
Immunogen:	Human recombinant protein fragment corresponding to amino acids 21-175 of human AGR2(NP_006399) produced in E.coli.
Formulation:	PBS (pH 7.3) containing 1% BSA, 50% glycerol and 0.02% sodium azide.
Concentration:	1 mg/ml
Purification:	Purified from mouse ascites fluids or tissue culture supernatant by affinity chromatography (protein A/G)
Conjugation:	Unconjugated
Storage:	Store at -20°C as received.
Stability:	Stable for 12 months from date of receipt.
Predicted Protein Size:	19.8 kDa
Gene Name:	anterior gradient 2, protein disulphide isomerase family member
Database Link:	<a href="#">NP_006399</a> <a href="#">Entrez Gene 23795 Mouse</a> <a href="#">Entrez Gene 298961 Rat</a> <a href="#">Entrez Gene 10551 Human</a> <a href="#">O95994</a>
Synonyms:	AG2; GOB-4; HAG-2; HEL-S-116; PDIA17; XAG-2
Protein Families:	Secreted Protein


[View online »](#)

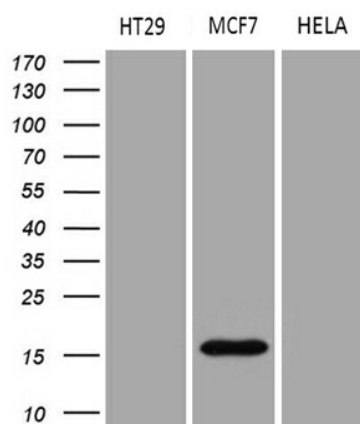
## Product images:



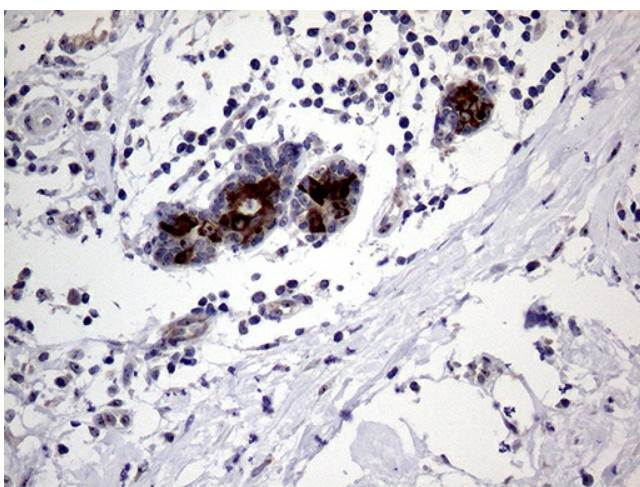
HEK293T cells were transfected with the pCMV6-ENTRY control (Left lane) or pCMV6-ENTRY AGR2 ([RC202023], Right lane) cDNA for 48 hrs and lysed. Equivalent amounts of cell lysates (5 ug per lane) were separated by SDS-PAGE and immunoblotted with anti-AGR2 (1:2000). Positive lysates [LY416668] (100ug) and [LC416668] (20ug) can be purchased separately from OriGene.



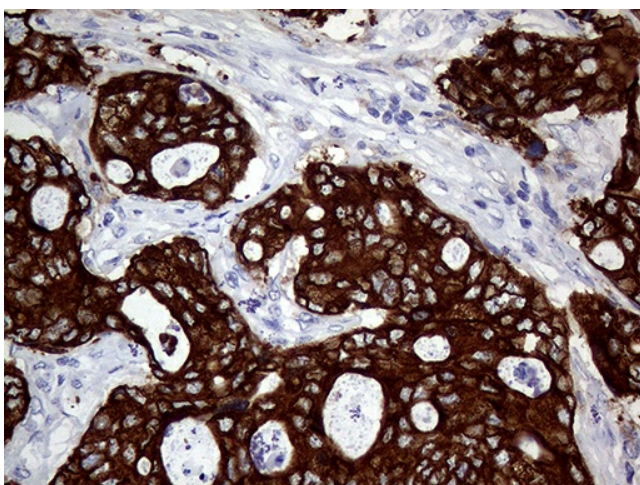
HEK293T cells were transfected with the pCMV6-ENTRY control AGR2 (Left lane) and pCMV6-ENTRY control AGR3 (Right lane) (1:2000).



Western blot analysis of extracts (35ug) from 3 different cell lines by using anti-AGR2 monoclonal antibody? (1:500)

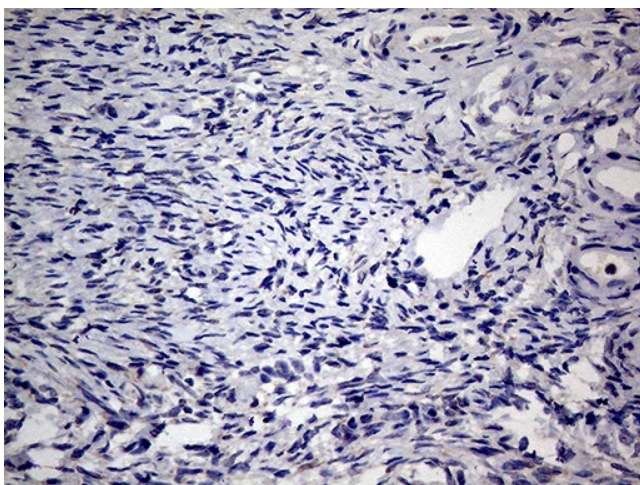


Immunohistochemical staining of paraffin-embedded Human breast tissue within the normal limits using anti-AGR2 mouse monoclonal antibody. Heat-induced epitope retrieval by EDTA solution buffer pH 8.0 at 120°C for 3 min.

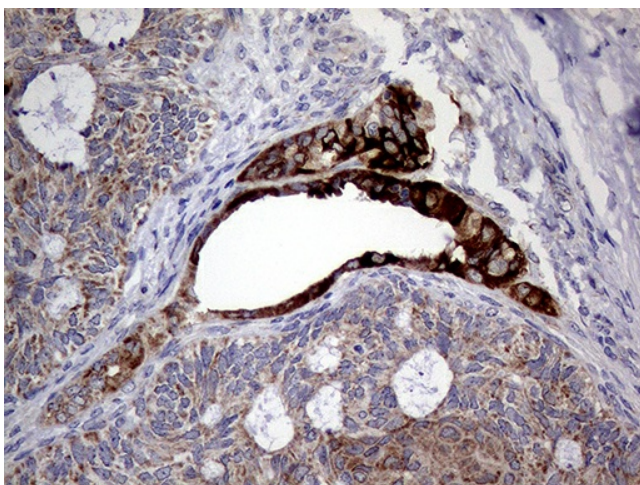


Immunohistochemical staining of paraffin-embedded Adenocarcinoma of Human breast tissue using anti-AGR2 mouse monoclonal antibody. Heat-induced epitope retrieval by EDTA solution buffer pH 8.0 at 120°C for 3 min.

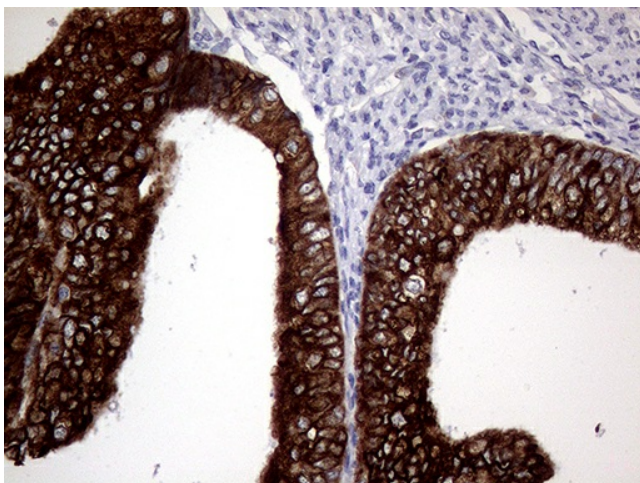




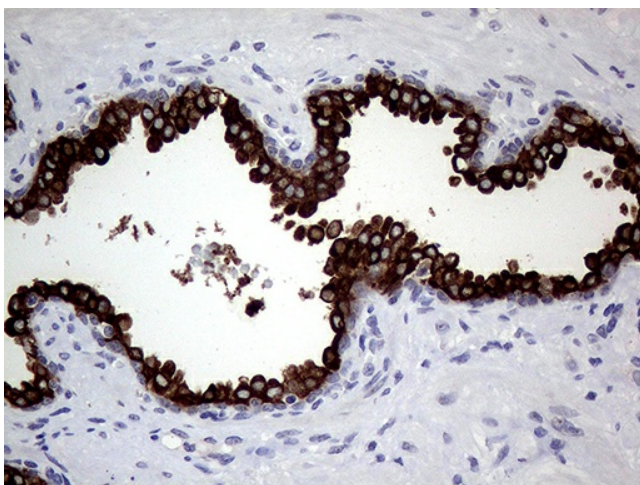
Immunohistochemical staining of paraffin-embedded Human Ovary tissue within the normal limits using anti-AGR2 mouse monoclonal antibody. This figure shows negative staining. Heat-induced epitope retrieval by EDTA solution buffer pH 8.0 at 120°C for 3 min.



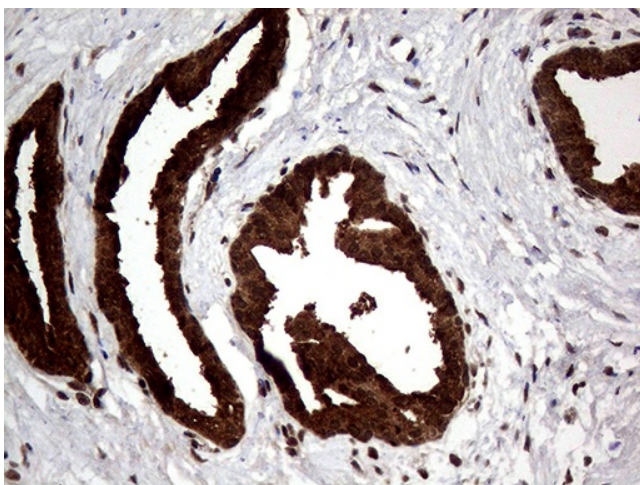
Immunohistochemical staining of paraffin-embedded Adenocarcinoma of Human ovary tissue using anti-AGR2 mouse monoclonal antibody. Heat-induced epitope retrieval by EDTA solution buffer pH 8.0 at 120°C for 3 min.



Immunohistochemical staining of paraffin-embedded Adenocarcinoma of Human endometrium tissue using anti-AGR2 mouse monoclonal antibody. Heat-induced epitope retrieval by EDTA solution buffer pH 8.0 at 120°C for 3 min.



Immunohistochemical staining of paraffin-embedded Human prostate tissue within the normal limits using anti-AGR2 mouse monoclonal antibody. Heat-induced epitope retrieval by EDTA solution buffer pH 8.0 at 120°C for 3 min.



Immunohistochemical staining of paraffin-embedded Carcinoma of Human prostate tissue using anti-AGR2 mouse monoclonal antibody. Heat-induced epitope retrieval by EDTA solution buffer pH 8.0 at 120°C for 3 min.