

Product datasheet for **TA809809M**

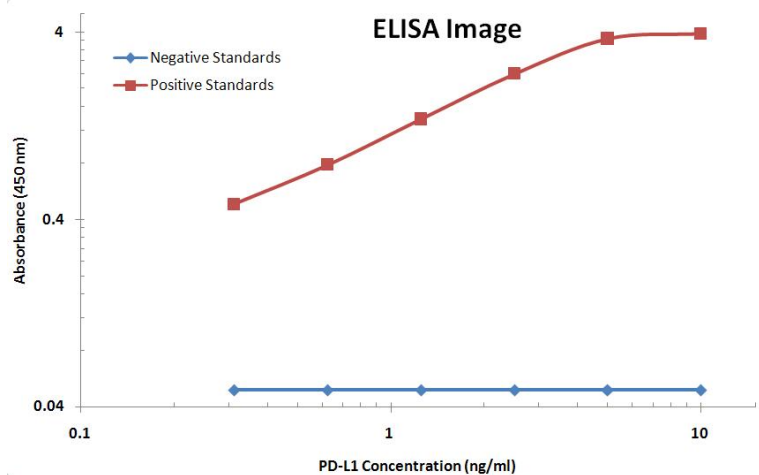
PD-L1 (CD274) Mouse Monoclonal Antibody [Clone ID: OTI13G7]

Product data:

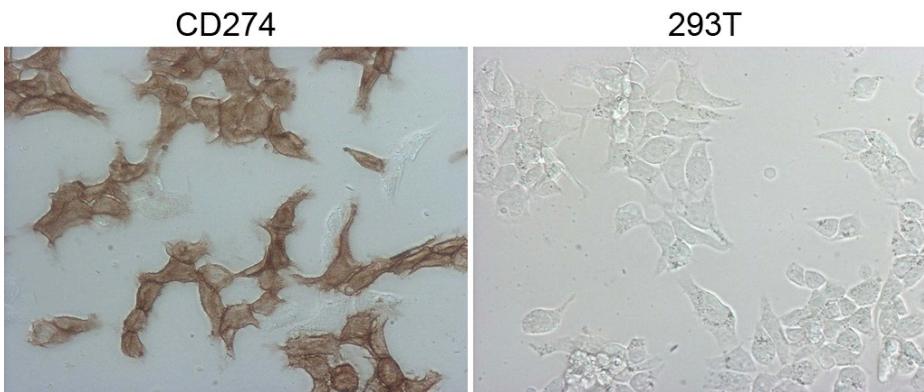
| | |
|-------------------------|--|
| Product Type: | Primary Antibodies |
| Clone Name: | OTI13G7 |
| Applications: | ELISA, FC, IF |
| Recommended Dilution: | IF 1:5000, FLOW 1:100 |
| Reactivity: | Human (Does not react with: Mouse) |
| Host: | Mouse |
| Isotype: | IgG1 |
| Clonality: | Monoclonal |
| Immunogen: | Human recombinant protein fragment corresponding to amino acids 19-239 of human PD-L1/CD274(NP_054862) produced in HEK293 cells. |
| Formulation: | PBS (pH 7.3) containing 1% BSA, 50% glycerol and 0.02% sodium azide. |
| Concentration: | 1 mg/ml |
| Purification: | Purified from mouse ascites fluids or tissue culture supernatant by affinity chromatography (protein A/G) |
| Conjugation: | Unconjugated |
| Storage: | Store at -20°C as received. |
| Stability: | Stable for 12 months from date of receipt. |
| Predicted Protein Size: | 31 kDa |
| Gene Name: | CD274 molecule |
| Database Link: | NP_054862 Entrez Gene 60533 Mouse Entrez Gene 29126 Human Q9NZQ7 |
| Synonyms: | B7-H; B7H1; PD-L1; PDCD1L1; PDCD1LG1; PDL1 |
| Protein Families: | Druggable Genome, Transmembrane |
| Protein Pathways: | Cell adhesion molecules (CAMs) |


[View online »](#)

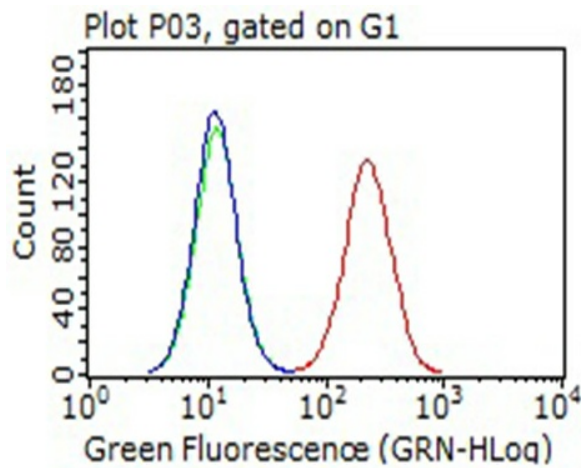
Product images:



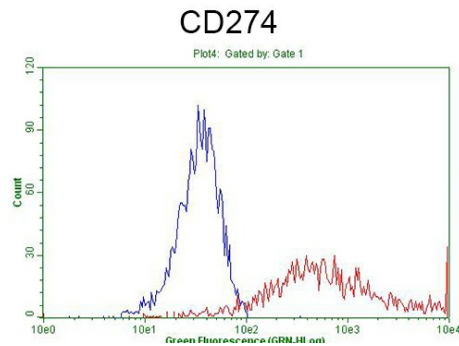
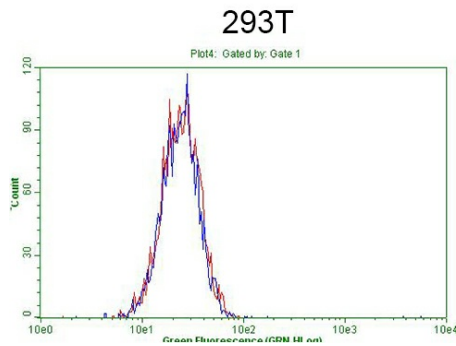
PD-L1 ELISA with 13G7 Capture ([TA809809]) and 9E12 Detection ([TA808771]) Antibodies. Substrate used: Recombinant Human PD-L1 ([TP700201])



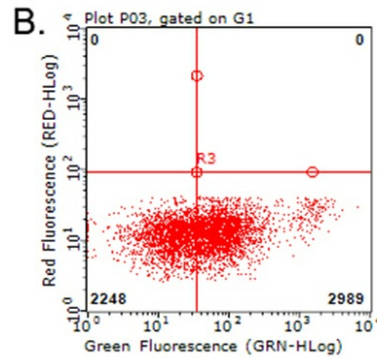
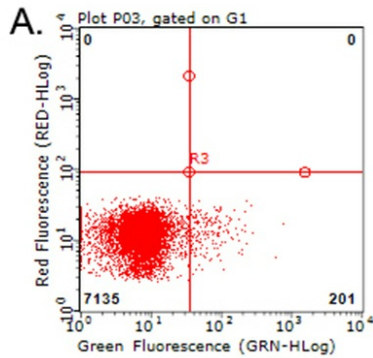
Immunocytochemistry staining of CD274 stable expression cells using anti-CD274 mouse monoclonal antibody ([TA507087]) (Left). The right is negative control (1:5000).



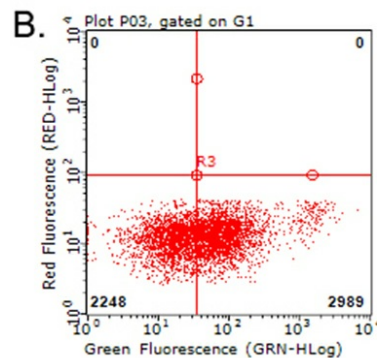
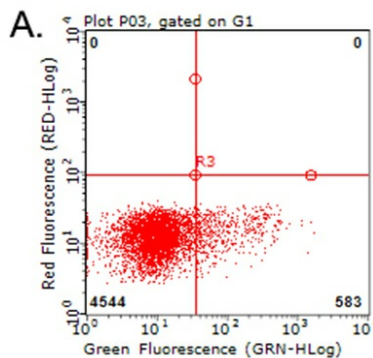
Flow cytometric Analysis of HCC78 cells, using anti-PDL1 antibody ([TA809809]), (Red), compared to isotype control, (green), and negative control (PBS), (Blue) (1:100).



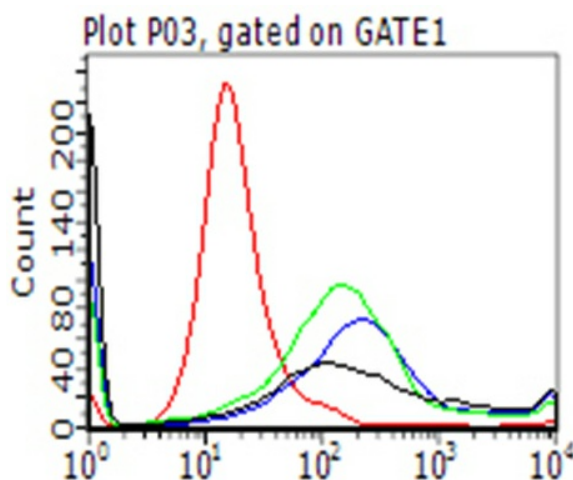
Flow cytometric Analysis of stable expression CD274 cells using anti-CD274 antibody ([TA809809]) (Red) compared to a nonspecific negative control antibody (Blue). The left is 293T as negative control (1:100).



Flow cytometric analysis of living PBMCs treated with 10ug/ml PHA for 72h (Right)/untreated (Left) using anti-PDL1 antibody ([TA809809]) (1:100).



Flow cytometric analysis of living PBMCs treated with 10ug/ml PHA for 72h (Right) using anti-PDL1 antibody ([TA809809]). Cells incubated with a non-specific antibody (Left) were used as isotype control (1:100).



Detection of PDL1 neutralizing antibody using MACS column. GFP+/PDL1+ 293T cells (co-transfected with PDL1 and GFP plasmid [RC213071], PS10010) were incubated with either PDL1 antibody [TA809809] (red), non-specific antibody (green), isotype control (blue) or PBS (black) and then mixed with PD1+ 293T cells [RC210364] linked with magnetic-beads. The mixed cells were pulled down using MACS column (Miltenyi Biotec) and analysed by Flow Cytometry. GFP+/PDL1+ cells would not be collected if PD1/PDL1 interaction is neutralized by the tested antibody (1:50).