

Product datasheet for **TA809806**

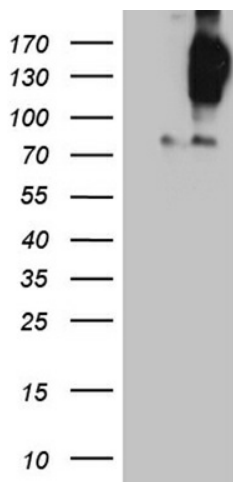
FYCO1 Mouse Monoclonal Antibody [Clone ID: OTI9D1]

Product data:

Product Type:	Primary Antibodies
Clone Name:	OTI9D1
Applications:	WB
Recommended Dilution:	WB 1:2000
Reactivity:	Human
Host:	Mouse
Isotype:	IgG1
Clonality:	Monoclonal
Immunogen:	Human recombinant protein fragment corresponding to amino acids 1102-1187 of human FYCO1 (NP_078789) produced in E.coli.
Formulation:	PBS (pH 7.3) containing 1% BSA, 50% glycerol and 0.02% sodium azide.
Concentration:	1 mg/ml
Purification:	Purified from mouse ascites fluids or tissue culture supernatant by affinity chromatography (protein A/G)
Conjugation:	Unconjugated
Storage:	Store at -20°C as received.
Stability:	Stable for 12 months from date of receipt.
Predicted Protein Size:	166.8 kDa
Gene Name:	FYVE and coiled-coil domain containing 1
Database Link:	NP_078789 Entrez Gene 79443 Human Q9BQ58
Synonyms:	CATC2; CTRCT18; RUFY3; ZFYVE7



[View online »](#)

Product images:

HEK293T cells were transfected with the pCMV6-ENTRY control (Left lane) or pCMV6-ENTRY FYCO1 ([RC215323], Right lane) cDNA for 48 hrs and lysed. Equivalent amounts of cell lysates (5 ug per lane) were separated by SDS-PAGE and immunoblotted with anti-FYCO1 (1:2000). Positive lysates [LY411258] (100ug) and [LC411258] (20ug) can be purchased separately from OriGene.