

## Product datasheet for **TA809794S**

### SUPT16H Mouse Monoclonal Antibody [Clone ID: OTI8A1]

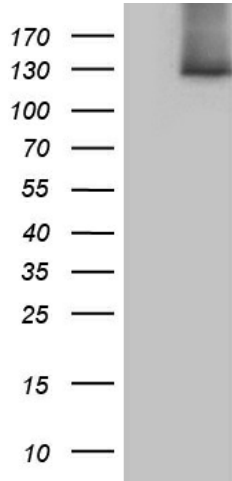
#### Product data:

Product Type:	Primary Antibodies
Clone Name:	OTI8A1
Applications:	IHC, WB
Recommended Dilution:	WB 1:500~2000, IHC 1:500
Reactivity:	Human, Mouse, Rat
Host:	Mouse
Isotype:	IgG1
Clonality:	Monoclonal
Immunogen:	Human recombinant protein fragment corresponding to amino acids 187-282 of human SUPT16H (NP_009123) produced in E.coli.
Formulation:	PBS (pH 7.3) containing 1% BSA, 50% glycerol and 0.02% sodium azide.
Concentration:	1 mg/ml
Purification:	Purified from mouse ascites fluids or tissue culture supernatant by affinity chromatography (protein A/G)
Conjugation:	Unconjugated
Storage:	Store at -20°C as received.
Stability:	Stable for 12 months from date of receipt.
Gene Name:	SPT16 homolog, facilitates chromatin remodeling subunit
Database Link:	<a href="#">NP_009123</a> <a href="#">Entrez Gene 305851 Rat</a> <a href="#">Entrez Gene 11198 Human</a> <a href="#">Q9Y5B9</a>
Synonyms:	CDC68; FACTP140; SPT16; SPT16/CDC68
Protein Families:	Druggable Genome, Transcription Factors

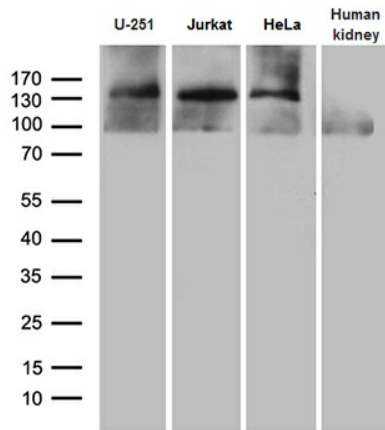


[View online »](#)

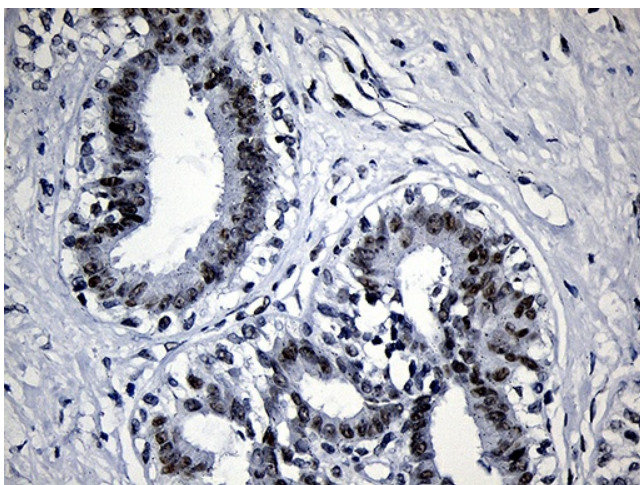
**Product images:**



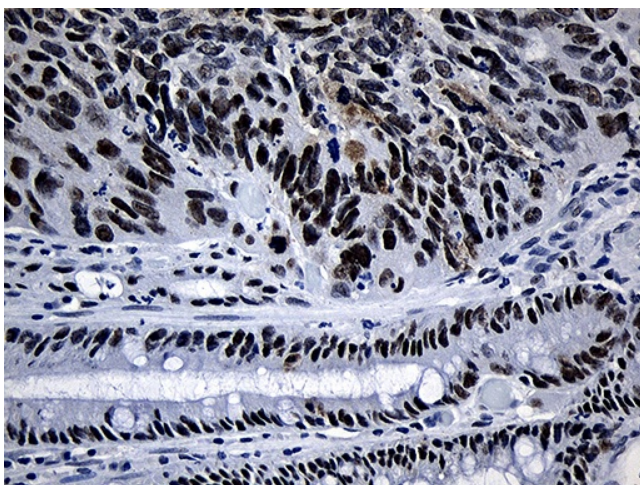
HEK293T cells were transfected with the pCMV6-ENTRY control (Cat# [PS100001], Left lane) or pCMV6-ENTRY SUPT16H (Cat# [RC218797], Right lane) cDNA for 48 hrs and lysed. Equivalent amounts of cell lysates (5 ug per lane) were separated by SDS-PAGE and immunoblotted with anti-SUPT16H (Cat# [TA809794])(1:2000).



Western blot analysis of extracts (35ug) from 3 different cell lines and human kidney tissue lysate by using anti-SUPT16H monoclonal antibody (1:500).



Immunohistochemical staining of paraffin-embedded Human breast tissue within the normal limits using anti-SUPT16H mouse monoclonal antibody. (Heat-induced epitope retrieval by 1mM EDTA in 10mM Tris buffer (pH8.5) at 120°C for 3min, [TA809794]) (1:500)



Immunohistochemical staining of paraffin-embedded Adenocarcinoma of Human colon tissue using anti-SUPT16H mouse monoclonal antibody. (Heat-induced epitope retrieval by 1mM EDTA in 10mM Tris buffer (pH8.5) at 120°C for 3min, [TA809794]) (1:500)