

## Product datasheet for **TA809776BM**

### **Tin2 (TNF2) Mouse Monoclonal Antibody (HRP conjugated) [Clone ID: OTI2C12]**

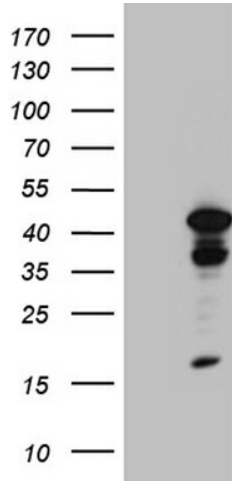
#### **Product data:**

Product Type:	Primary Antibodies
Clone Name:	OTI2C12
Applications:	IHC, WB
Recommended Dilution:	WB 1:500~2000, IHC 1:2000
Reactivity:	Human, Rat, Mouse
Host:	Mouse
Isotype:	IgG2b
Clonality:	Monoclonal
Immunogen:	Human recombinant protein fragment corresponding to amino acids 266-347 of human TNF2 (NP_036593) produced in E.coli.
Formulation:	PBS (pH 7.3) containing 1% BSA, 50% glycerol.
Concentration:	0.5 mg/ml
Purification:	Purified from mouse ascites fluids or tissue culture supernatant by affinity chromatography (protein A/G)
Conjugation:	HRP
Storage:	Store at -20°C as received.
Stability:	Stable for 12 months from date of receipt.
Predicted Protein Size:	39.3 kDa
Gene Name:	TERF1 interacting nuclear factor 2
Database Link:	<a href="#">NP_036593</a> <a href="#">Entrez Gene 28113 Mouse</a> <a href="#">Entrez Gene 290232 Rat</a> <a href="#">Entrez Gene 26277 Human</a> <a href="#">Q9BSI4</a>
Synonyms:	DKCA3; TIN2

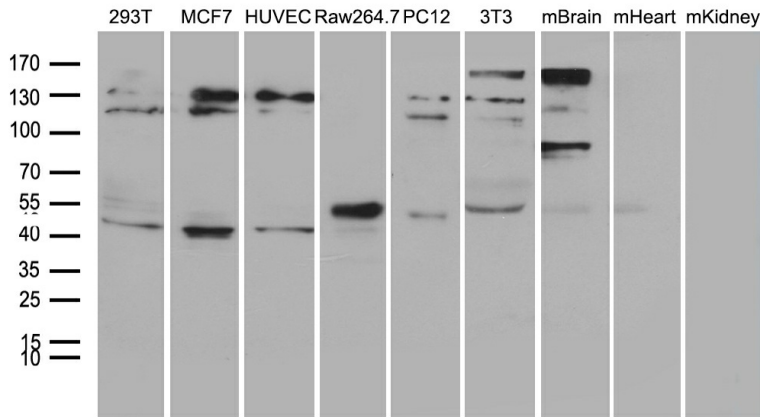


[View online »](#)

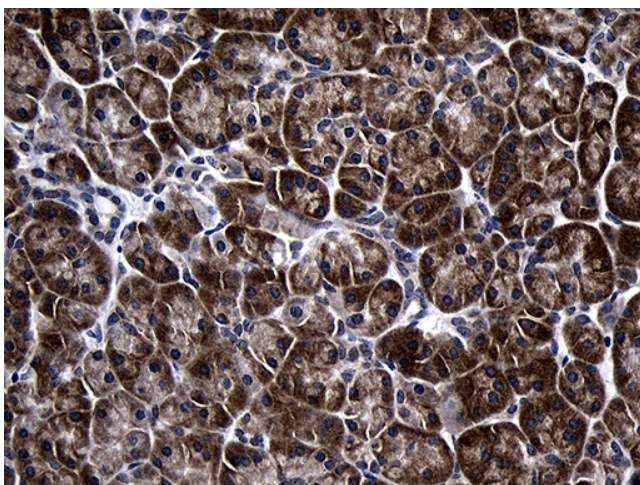
**Product images:**



HEK293T cells were transfected with the pCMV6-ENTRY control (Cat# [PS100001], Left lane) or pCMV6-ENTRY TNF2 (Cat# [RC214419], Right lane) cDNA for 48 hrs and lysed. Equivalent amounts of cell lysates (5 ug per lane) were separated by SDS-PAGE and immunoblotted with anti-TNF2 (Cat# [TA809776])(1:2000). Positive lysates [LY402217] (100ug) and [LC402217] (20ug) can be purchased separately from OriGene.



Western blot analysis of extracts (35ug) from 6 different cell lines and 3 different tissue lines by using anti-TNF2 monoclonal antibody (1:500).



Immunohistochemical staining of paraffin-embedded Human pancreas tissue within the normal limits using anti-TNF2 mouse monoclonal antibody. (Heat-induced epitope retrieval by 1mM EDTA in 10mM Tris buffer (pH8.5) at 120°C for 3min, [TA809776]) (1:150) (1:2000)