

Product datasheet for **TA809767S**

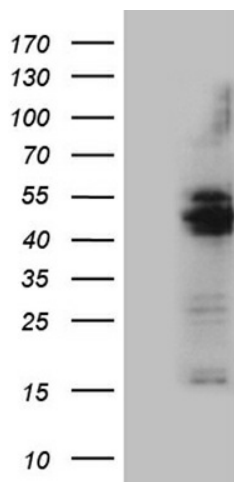
MAG1 (GPAT3) Mouse Monoclonal Antibody [Clone ID: OTI6A3]

Product data:

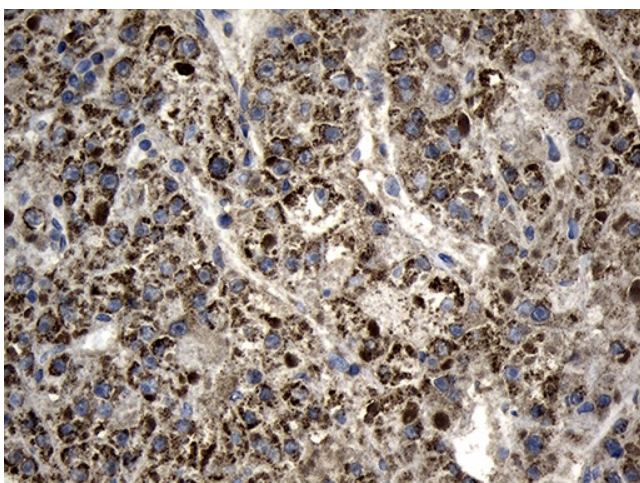
Product Type:	Primary Antibodies
Clone Name:	OTI6A3
Applications:	IHC, WB
Recommended Dilution:	WB 1:500, IHC 1:500
Reactivity:	Human
Host:	Mouse
Isotype:	IgG1
Clonality:	Monoclonal
Immunogen:	Human recombinant protein fragment corresponding to amino acids 41-131 of human AGPAT9 (NP_116106) produced in E.coli.
Formulation:	PBS (pH 7.3) containing 1% BSA, 50% glycerol and 0.02% sodium azide.
Concentration:	1 mg/ml
Purification:	Purified from mouse ascites fluids or tissue culture supernatant by affinity chromatography (protein A/G)
Conjugation:	Unconjugated
Storage:	Store at -20°C as received.
Stability:	Stable for 12 months from date of receipt.
Predicted Protein Size:	48.5 kDa
Gene Name:	glycerol-3-phosphate acyltransferase 3
Database Link:	NP_116106 Entrez Gene 84803 Human Q53EU6
Synonyms:	AGPAT8; AGPAT9; AGPAT 10; AGPAT10; HMFN0839; LPAAT-theta; MAG1
Protein Families:	Transmembrane



[View online »](#)

Product images:

HEK293T cells were transfected with the pCMV6-ENTRY control (Left lane) or pCMV6-ENTRY AGPAT9 ([RC219236], Right lane) cDNA for 48 hrs and lysed. Equivalent amounts of cell lysates (5 ug per lane) were separated by SDS-PAGE and immunoblotted with anti-AGPAT9 (1:500). Positive lysates [LY403194] (100ug) and [LC403194] (20ug) can be purchased separately from OriGene.



Immunohistochemical staining of paraffin-embedded Human liver tissue within the normal limits using anti-AGPAT9 mouse monoclonal antibody. (Heat-induced epitope retrieval by 1mM EDTA in 10mM Tris buffer (pH8.5) at 120°C for 3min, [TA809767]) (1:500)