

Product datasheet for **TA809766M**

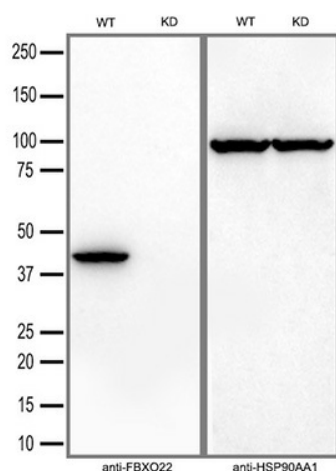
FBXO22 Mouse Monoclonal Antibody [Clone ID: OTI1H1]

Product data:

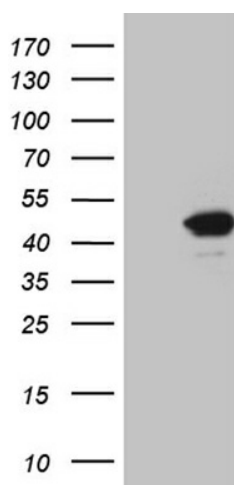
Product Type:	Primary Antibodies
Clone Name:	OTI1H1
Applications:	WB
Recommended Dilution:	WB 1:500~2000
Reactivity:	Human, Mouse, Rat
Host:	Mouse
Isotype:	IgG1
Clonality:	Monoclonal
Immunogen:	Human recombinant protein fragment corresponding to amino acids 1-220 of human FBXO22 (NP_671717) produced in E.coli.
Formulation:	PBS (pH 7.3) containing 1% BSA, 50% glycerol and 0.02% sodium azide.
Concentration:	1 mg/ml
Purification:	Purified from mouse ascites fluids or tissue culture supernatant by affinity chromatography (protein A/G)
Conjugation:	Unconjugated
Storage:	Store at -20°C as received.
Stability:	Stable for 12 months from date of receipt.
Predicted Protein Size:	44.3 kDa
Gene Name:	F-box protein 22
Database Link:	NP_671717 Entrez Gene 71999 Mouse Entrez Gene 300724 Rat Entrez Gene 26263 Human Q8NEZ5
Synonyms:	FBX22; FISTC1
Protein Families:	Druggable Genome


[View online »](#)

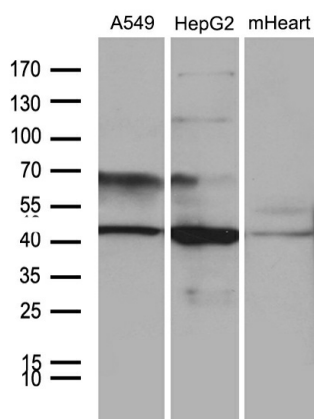
Product images:



Equivalent amounts of cell lysates (30 ug per lane) of wild-type HeLa cells (WT) and FBXO22-Knockdown HeLa cells (KD) were separated by SDS-PAGE and immunoblotted with anti-FBXO22 monoclonal antibody [TA809766] (1:2500). Then the blotted membrane was stripped and reprobed with anti-HSP90AA1 antibody as a loading control.



HEK293T cells were transfected with the pCMV6-ENTRY control (Cat# [PS100001], Left lane) or pCMV6-ENTRY FBXO22 (Cat# [RC208029], Right lane) cDNA for 48 hrs and lysed. Equivalent amounts of cell lysates (5 ug per lane) were separated by SDS-PAGE and immunoblotted with anti-FBXO22 (Cat# [TA809766])(1:2000). Positive lysates [LY407782] (100ug) and [LC407782] (20ug) can be purchased separately from OriGene.



Western blot analysis of extracts (35ug) from 2 different cell lines and mouse heart tissue lysate by using anti-FBXO22 monoclonal antibody (1:500).