

## Product datasheet for **TA809764BM**

### **NLRX1 Mouse Monoclonal Antibody (HRP conjugated) [Clone ID: OTI4H8]**

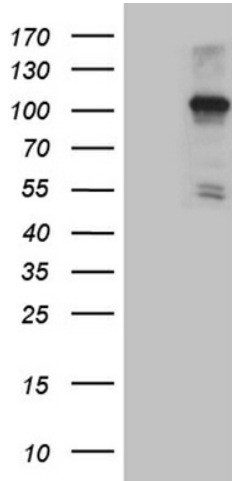
#### **Product data:**

|                              |                                                                                                                                                                                                                                                                                                              |
|------------------------------|--------------------------------------------------------------------------------------------------------------------------------------------------------------------------------------------------------------------------------------------------------------------------------------------------------------|
| <b>Product Type:</b>         | Primary Antibodies                                                                                                                                                                                                                                                                                           |
| <b>Clone Name:</b>           | OTI4H8                                                                                                                                                                                                                                                                                                       |
| <b>Applications:</b>         | IHC, WB                                                                                                                                                                                                                                                                                                      |
| <b>Recommended Dilution:</b> | WB 1:500~2000, IHC 1:150                                                                                                                                                                                                                                                                                     |
| <b>Reactivity:</b>           | Human, Mouse, Rat                                                                                                                                                                                                                                                                                            |
| <b>Host:</b>                 | Mouse                                                                                                                                                                                                                                                                                                        |
| <b>Isotype:</b>              | IgG2b                                                                                                                                                                                                                                                                                                        |
| <b>Clonality:</b>            | Monoclonal                                                                                                                                                                                                                                                                                                   |
| <b>Immunogen:</b>            | Human recombinant protein fragment corresponding to amino acids 866-975 of human NLRX1 (NP_078894) produced in E.coli.                                                                                                                                                                                       |
| <b>Formulation:</b>          | PBS (pH 7.3) containing 1% BSA, 50% glycerol.                                                                                                                                                                                                                                                                |
| <b>Concentration:</b>        | 0.5 mg/ml                                                                                                                                                                                                                                                                                                    |
| <b>Purification:</b>         | Purified from mouse ascites fluids or tissue culture supernatant by affinity chromatography (protein A/G)                                                                                                                                                                                                    |
| <b>Conjugation:</b>          | HRP                                                                                                                                                                                                                                                                                                          |
| <b>Storage:</b>              | Store at -20°C as received.                                                                                                                                                                                                                                                                                  |
| <b>Stability:</b>            | Stable for 12 months from date of receipt.                                                                                                                                                                                                                                                                   |
| <b>Gene Name:</b>            | NLR family member X1                                                                                                                                                                                                                                                                                         |
| <b>Database Link:</b>        | <a href="#">NP_078894</a><br><a href="#">Entrez Gene 270151</a> <a href="#">MouseEntrez Gene 315599</a> <a href="#">RatEntrez Gene 79671</a> <a href="#">Human Q86UT6</a>                                                                                                                                    |
| <b>Background:</b>           | The protein encoded by this gene is a member of the NLR family and localizes to the outer mitochondrial membrane. The encoded protein is a regulator of mitochondrial antiviral responses. Three transcript variants encoding the same protein have been found for this gene. [provided by RefSeq, Aug 2013] |
| <b>Synonyms:</b>             | CLR11.3; DLNB26; NOD5; NOD9; NOD26                                                                                                                                                                                                                                                                           |
| <b>Protein Pathways:</b>     | RIG-I-like receptor signaling pathway                                                                                                                                                                                                                                                                        |

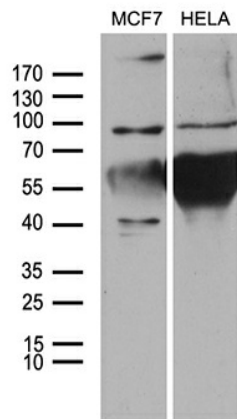


[View online »](#)

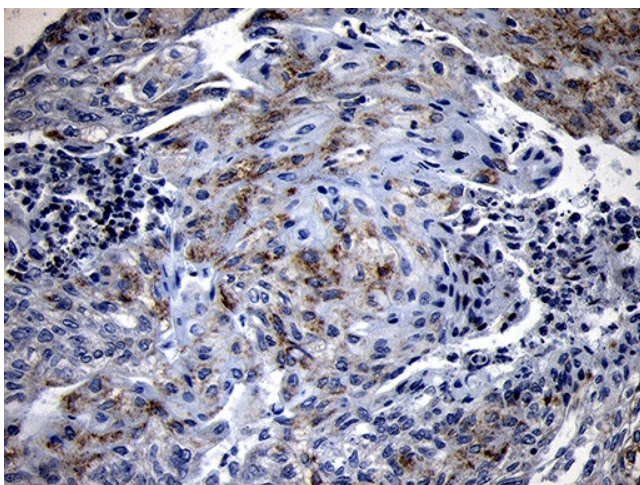
**Product images:**



HEK293T cells were transfected with the pCMV6-ENTRY control (Cat# [PS100001], Left lane) or pCMV6-ENTRY NLRX1 (Cat# [RC211111], Right lane) cDNA for 48 hrs and lysed. Equivalent amounts of cell lysates (5 ug per lane) were separated by SDS-PAGE and immunoblotted with anti-NLRX1 (Cat# [TA809764])(1:2000). Positive lysates [LY403011] (100ug) and [LC403011] (20ug) can be purchased separately from OriGene.



Western blot analysis of extracts (35ug) from 2 different cell lines by using anti-NLRX1 monoclonal antibody (1:500).



Immunohistochemical staining of paraffin-embedded Adenocarcinoma of Human endometrium tissue using anti-NLRX1 mouse monoclonal antibody. (Heat-induced epitope retrieval by 1mM EDTA in 10mM Tris buffer (pH8.5) at 120°C for 3min, [TA809764]) (1:150)