

## Product datasheet for **TA809764AM**

### **NLRX1 Mouse Monoclonal Antibody (Biotin conjugated) [Clone ID: OTI4H8]**

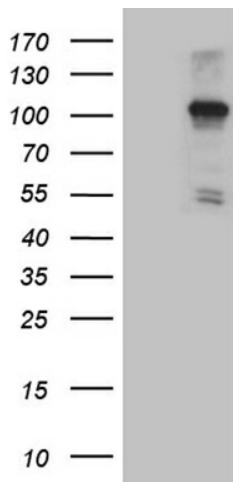
#### **Product data:**

<b>Product Type:</b>	Primary Antibodies
<b>Clone Name:</b>	OTI4H8
<b>Applications:</b>	IHC, WB
<b>Recommended Dilution:</b>	WB 1:500~2000, IHC 1:150
<b>Reactivity:</b>	Human, Mouse, Rat
<b>Host:</b>	Mouse
<b>Isotype:</b>	IgG2b
<b>Clonality:</b>	Monoclonal
<b>Immunogen:</b>	Human recombinant protein fragment corresponding to amino acids 866-975 of human NLRX1 (NP_078894) produced in E.coli.
<b>Formulation:</b>	PBS (pH 7.3) containing 1% BSA, 50% glycerol and 0.02% sodium azide.
<b>Concentration:</b>	0.5 mg/ml
<b>Purification:</b>	Purified from mouse ascites fluids or tissue culture supernatant by affinity chromatography (protein A/G)
<b>Conjugation:</b>	Biotin
<b>Storage:</b>	Store at -20°C as received.
<b>Stability:</b>	Stable for 12 months from date of receipt.
<b>Gene Name:</b>	NLR family member X1
<b>Database Link:</b>	<a href="#">NP_078894</a> <a href="#">Entrez Gene 270151</a> <a href="#">MouseEntrez Gene 315599</a> <a href="#">RatEntrez Gene 79671</a> <a href="#">Human Q86UT6</a>
<b>Background:</b>	The protein encoded by this gene is a member of the NLR family and localizes to the outer mitochondrial membrane. The encoded protein is a regulator of mitochondrial antiviral responses. Three transcript variants encoding the same protein have been found for this gene. [provided by RefSeq, Aug 2013]
<b>Synonyms:</b>	CLR11.3; DLNB26; NOD5; NOD9; NOD26
<b>Protein Pathways:</b>	RIG-I-like receptor signaling pathway

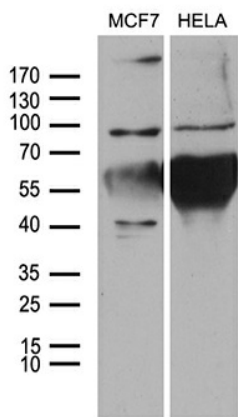


[View online »](#)

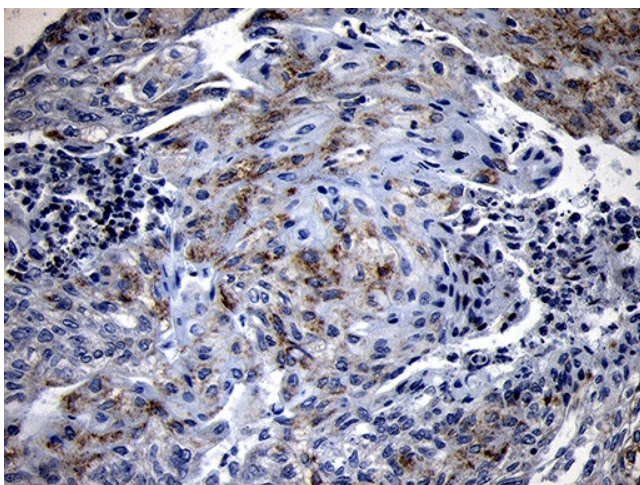
**Product images:**



HEK293T cells were transfected with the pCMV6-ENTRY control (Cat# [PS100001], Left lane) or pCMV6-ENTRY NLRX1 (Cat# [RC211111], Right lane) cDNA for 48 hrs and lysed. Equivalent amounts of cell lysates (5 ug per lane) were separated by SDS-PAGE and immunoblotted with anti-NLRX1 (Cat# [TA809764])(1:2000). Positive lysates [LY403011] (100ug) and [LC403011] (20ug) can be purchased separately from OriGene.



Western blot analysis of extracts (35ug) from 2 different cell lines by using anti-NLRX1 monoclonal antibody (1:500).



Immunohistochemical staining of paraffin-embedded Adenocarcinoma of Human endometrium tissue using anti-NLRX1 mouse monoclonal antibody. (Heat-induced epitope retrieval by 1mM EDTA in 10mM Tris buffer (pH8.5) at 120°C for 3min, [TA809764]) (1:150)