

## Product datasheet for **TA809761M**

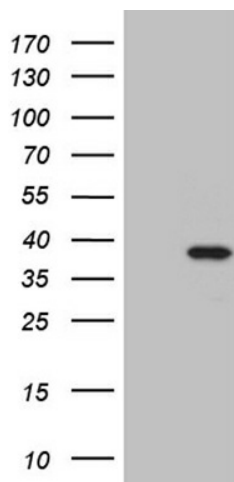
### PHF20L1 Mouse Monoclonal Antibody [Clone ID: OTI3F3]

#### Product data:

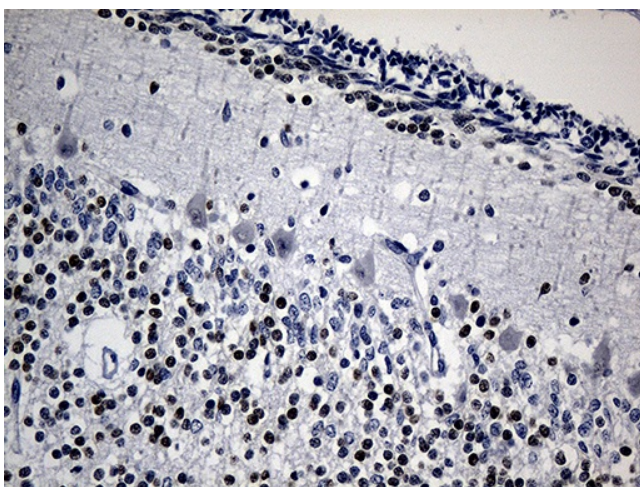
|                         |  |
|-------------------------|--|
| Product Type:           | Primary Antibodies   |
| Clone Name:             | OTI3F3   |
| Applications:           | IHC, WB  |
| Recommended Dilution:   | WB 1:2000, IHC 1:150   |
| Reactivity:             | Human, Mouse, Rat  |
| Host:                   | Mouse  |
| Isotype:                | IgG1   |
| Clonality:              | Monoclonal   |
| Immunogen:              | Full length human recombinant protein of human PHF20L1 (NP_940915) produced in E.coli.   |
| Formulation:            | PBS (pH 7.3) containing 1% BSA, 50% glycerol and 0.02% sodium azide.   |
| Concentration:          | 1 mg/ml  |
| Purification:           | Purified from mouse ascites fluids or tissue culture supernatant by affinity chromatography (protein A/G)  |
| Conjugation:            | Unconjugated   |
| Storage:                | Store at -20°C as received.  |
| Stability:              | Stable for 12 months from date of receipt.   |
| Predicted Protein Size: | 32.6 kDa   |
| Gene Name:              | PHD finger protein 20-like 1   |
| Database Link:          | <a href="#">NP_940915</a><br><a href="#">Entrez Gene 239510 Mouse</a> <a href="#">Entrez Gene 314964 Rat</a> <a href="#">Entrez Gene 51105 Human</a><br><a href="#">A8MW92</a> |
| Synonyms:               | CGI-72; TDRD20B; URLC1   |
| Protein Families:       | Druggable Genome, Transcription Factors  |


[View online »](#)

## Product images:



HEK293T cells were transfected with the pCMV6-ENTRY control (Left lane) or pCMV6-ENTRY PHF20L1 ([RC224165], Right lane) cDNA for 48 hrs and lysed. Equivalent amounts of cell lysates (5 ug per lane) were separated by SDS-PAGE and immunoblotted with anti-PHF20L1 (1:2000). Positive lysates [LY404899] (100ug) and [LC404899] (20ug) can be purchased separately from OriGene.



Immunohistochemical staining of paraffin-embedded Human embryonic cerebellum within the normal limits using anti-PHF20L1 mouse monoclonal antibody. Heat-induced epitope retrieval by EDTA solution buffer pH 8.0 at 120°C for 3 min.