

Product datasheet for **TA809761BM**

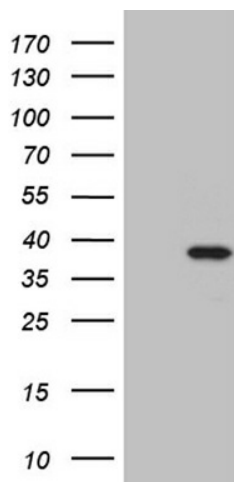
PHF20L1 Mouse Monoclonal Antibody (HRP conjugated) [Clone ID: OTI3F3]

Product data:

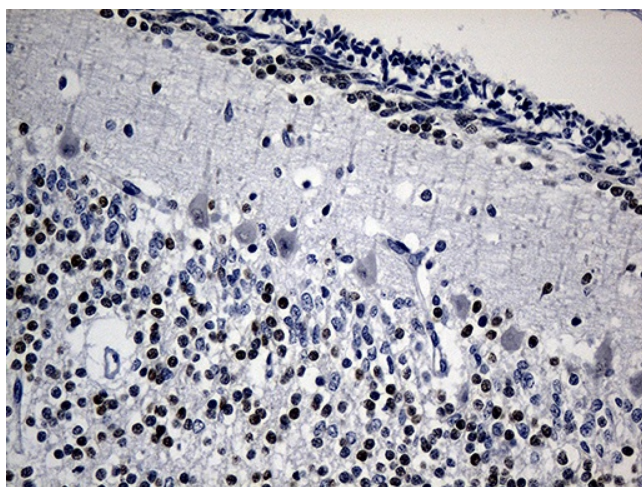
Product Type:	Primary Antibodies
Clone Name:	OTI3F3
Applications:	IHC, WB
Recommended Dilution:	WB 1:2000, IHC 1:150
Reactivity:	Human, Mouse, Rat
Host:	Mouse
Isotype:	IgG1
Clonality:	Monoclonal
Immunogen:	Full length human recombinant protein of human PHF20L1 (NP_940915) produced in E.coli.
Formulation:	PBS (pH 7.3) containing 1% BSA, 50% glycerol.
Concentration:	0.5 mg/ml
Purification:	Purified from mouse ascites fluids or tissue culture supernatant by affinity chromatography (protein A/G)
Conjugation:	HRP
Storage:	Store at -20°C as received.
Stability:	Stable for 12 months from date of receipt.
Predicted Protein Size:	32.6 kDa
Gene Name:	PHD finger protein 20-like 1
Database Link:	NP_940915 Entrez Gene 239510 Mouse Entrez Gene 314964 Rat Entrez Gene 51105 Human A8MW92
Synonyms:	CGI-72; TDRD20B; URLC1
Protein Families:	Druggable Genome, Transcription Factors



[View online »](#)

Product images:

HEK293T cells were transfected with the pCMV6-ENTRY control (Left lane) or pCMV6-ENTRY PHF20L1 [RC224165], Right lane) cDNA for 48 hrs and lysed. Equivalent amounts of cell lysates (5 ug per lane) were separated by SDS-PAGE and immunoblotted with anti-PHF20L1 (1:2000). Positive lysates [LY404899] (100ug) and [LC404899] (20ug) can be purchased separately from OriGene.



Immunohistochemical staining of paraffin-embedded Human embryonic cerebellum within the normal limits using anti-PHF20L1 mouse monoclonal antibody. (Heat-induced epitope retrieval by 1mM EDTA in 10mM Tris buffer (pH8.5) at 120°C for 3min, [TA809761]) (1:150)