

Product datasheet for **TA809756AM**

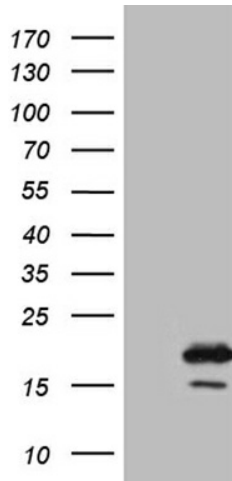
AGR2 Mouse Monoclonal Antibody (Biotin conjugated) [Clone ID: OTI3B5]

Product data:

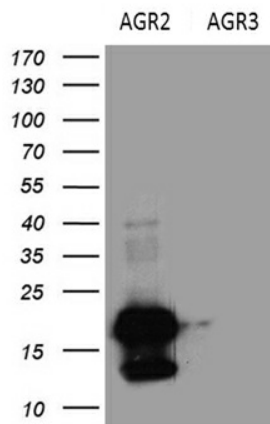
Product Type:	Primary Antibodies
Clone Name:	OTI3B5
Applications:	IHC, WB
Recommended Dilution:	WB 1:500~2000, IHC 1:2000
Reactivity:	Human, Mouse, Rat
Host:	Mouse
Isotype:	IgG2b
Clonality:	Monoclonal
Immunogen:	Human recombinant protein fragment corresponding to amino acids 21-175 of human AGR2(NP_006399) produced in E.coli.
Formulation:	PBS (pH 7.3) containing 1% BSA, 50% glycerol and 0.02% sodium azide.
Concentration:	0.5 mg/ml
Purification:	Purified from mouse ascites fluids or tissue culture supernatant by affinity chromatography (protein A/G)
Conjugation:	Biotin
Storage:	Store at -20°C as received.
Stability:	Stable for 12 months from date of receipt.
Predicted Protein Size:	19.8 kDa
Gene Name:	anterior gradient 2, protein disulphide isomerase family member
Database Link:	NP_006399 Entrez Gene 23795 Mouse Entrez Gene 298961 Rat Entrez Gene 10551 Human O95994
Synonyms:	AG2; GOB-4; HAG-2; HEL-S-116; PDIA17; XAG-2
Protein Families:	Secreted Protein



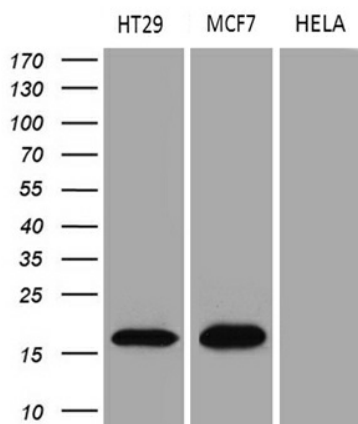
[View online »](#)

Product images:


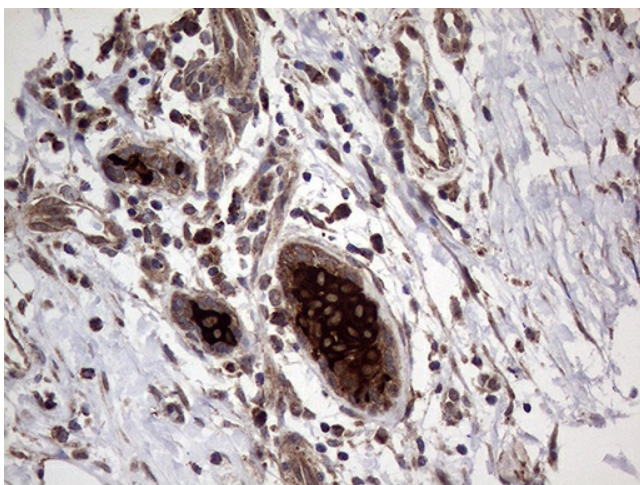
HEK293T cells were transfected with the pCMV6-ENTRY control (Left lane) or pCMV6-ENTRY AGR2 ([RC202023], Right lane) cDNA for 48 hrs and lysed. Equivalent amounts of cell lysates (5 ug per lane) were separated by SDS-PAGE and immunoblotted with anti-AGR2 (1:2000). Positive lysates [LY416668] (100ug) and [LC416668] (20ug) can be purchased separately from OriGene.



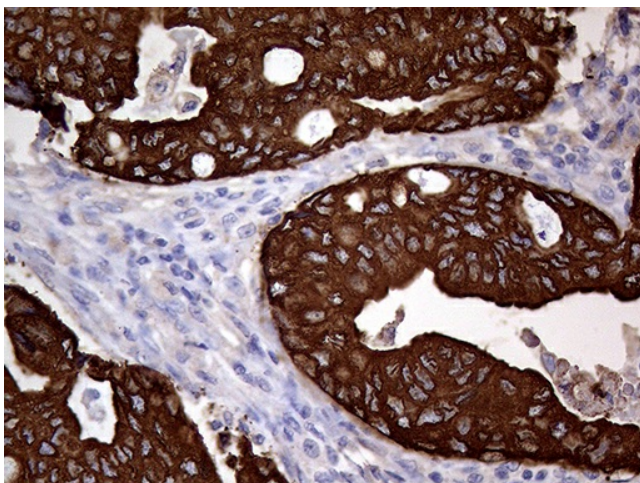
HEK293T cells were transfected with the pCMV6-ENTRY AGR2 ([RC202023], Left lane) or pCMV6-ENTRY AGR3 ([RC208897], Right lane) cDNA for 48 hrs and lysed. Equivalent amounts of cell lysates (5 ug per lane) were separated by SDS-PAGE and immunoblotted with anti-AGR2 (1:2000).



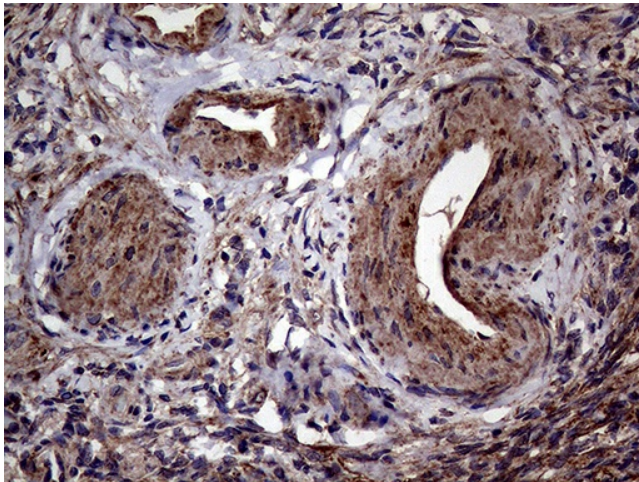
Western blot analysis of extracts (35ug) from 3 different cell lines by using anti-AGR2 monoclonal antibody (1:500).



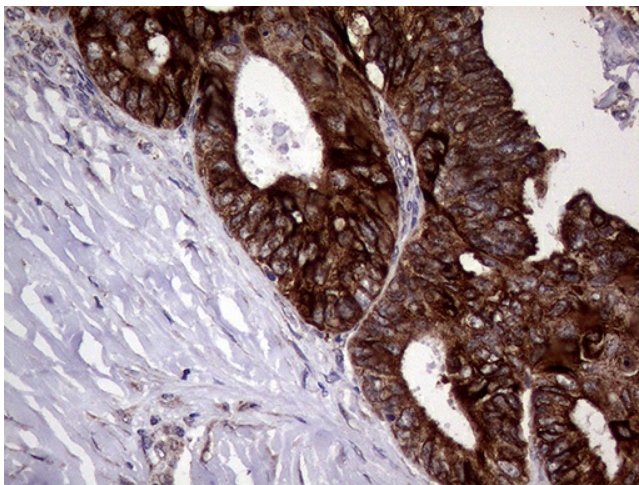
Immunohistochemical staining of paraffin-embedded Human breast tissue within the normal limits using anti-AGR2 mouse monoclonal antibody. (Heat-induced epitope retrieval by 1mM EDTA in 10mM Tris buffer (pH8.5) at 120°C for 3min, [TA809756]) (1:2000)



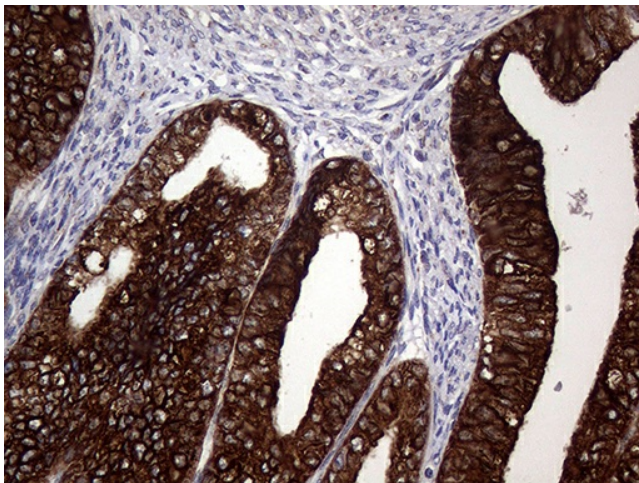
Immunohistochemical staining of paraffin-embedded Adenocarcinoma of Human breast tissue using anti-AGR2 mouse monoclonal antibody. (Heat-induced epitope retrieval by 1mM EDTA in 10mM Tris buffer (pH8.5) at 120°C for 3min, [TA809756]) (1:2000)



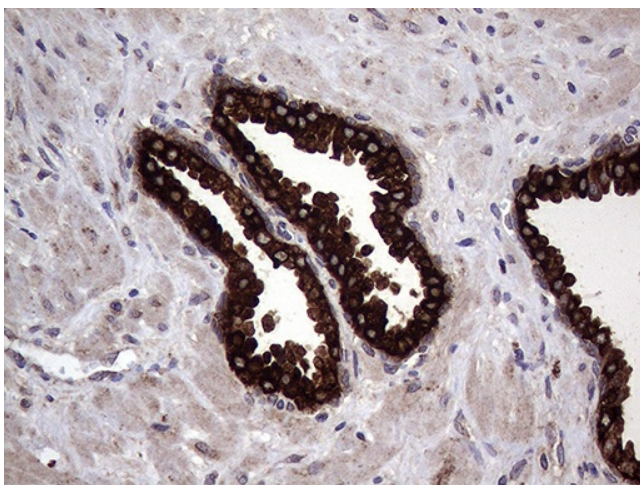
Immunohistochemical staining of paraffin-embedded Human Ovary tissue within the normal limits using anti-AGR2 mouse monoclonal antibody. (Heat-induced epitope retrieval by 1mM EDTA in 10mM Tris buffer (pH8.5) at 120°C for 3min, [TA809756]) (1:2000)



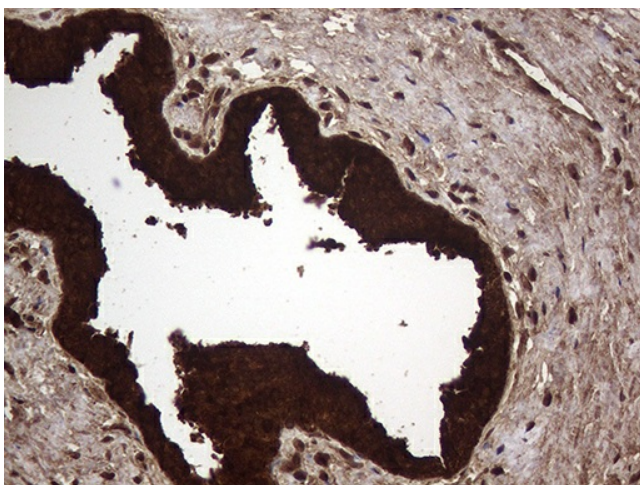
Immunohistochemical staining of paraffin-embedded Adenocarcinoma of Human ovary tissue using anti-AGR2 mouse monoclonal antibody. (Heat-induced epitope retrieval by 1mM EDTA in 10mM Tris buffer (pH8.5) at 120°C for 3min, [TA809756]) (1:2000)



Immunohistochemical staining of paraffin-embedded Adenocarcinoma of Human endometrium tissue using anti-AGR2 mouse monoclonal antibody. (Heat-induced epitope retrieval by 1mM EDTA in 10mM Tris buffer (pH8.5) at 120°C for 3min, [TA809756]) (1:2000)



Immunohistochemical staining of paraffin-embedded Human prostate tissue within the normal limits using anti-AGR2 mouse monoclonal antibody. (Heat-induced epitope retrieval by 1mM EDTA in 10mM Tris buffer (pH8.5) at 120°C for 3min, [TA809756]) (1:2000)



Immunohistochemical staining of paraffin-embedded Carcinoma of Human prostate tissue using anti-AGR2 mouse monoclonal antibody. (Heat-induced epitope retrieval by 1mM EDTA in 10mM Tris buffer (pH8.5) at 120°C for 3min, [TA809756]) (1:2000)