

Product datasheet for **TA809736**

CD161 (KLRB1) Mouse Monoclonal Antibody [Clone ID: OTI1D8]

Product data:

| | |
|-------------------------|--|
| Product Type: | Primary Antibodies |
| Clone Name: | OTI1D8 |
| Applications: | IHC, WB |
| Recommended Dilution: | WB 1:500, IHC 1:500 |
| Reactivity: | Human |
| Host: | Mouse |
| Isotype: | IgG1 |
| Clonality: | Monoclonal |
| Immunogen: | Human recombinant protein fragment corresponding to amino acids 67-225 of human KLRB1(NP_002249) produced in E.coli. |
| Formulation: | PBS (pH 7.3) containing 1% BSA, 50% glycerol and 0.02% sodium azide. |
| Concentration: | 1 mg/ml |
| Purification: | Purified from mouse ascites fluids or tissue culture supernatant by affinity chromatography (protein A/G) |
| Conjugation: | Unconjugated |
| Storage: | Store at -20°C as received. |
| Stability: | Stable for 12 months from date of receipt. |
| Predicted Protein Size: | 25.2 kDa |
| Gene Name: | killer cell lectin like receptor B1 |
| Database Link: | NP_002249 Entrez Gene 3820 Human Q12918 |



[View online »](#)

Background:

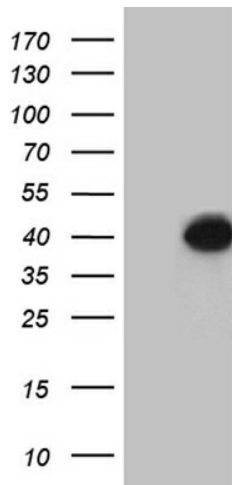
Natural killer (NK) cells are lymphocytes that mediate cytotoxicity and secrete cytokines after immune stimulation. Several genes of the C-type lectin superfamily, including the rodent NKR-P1 family of glycoproteins, are expressed by NK cells and may be involved in the regulation of NK cell function. The KLRB1 protein contains an extracellular domain with several motifs characteristic of C-type lectins, a transmembrane domain, and a cytoplasmic domain. The KLRB1 protein is classified as a type II membrane protein because it has an external C terminus. [provided by RefSeq, Jul 2008]

Synonyms:

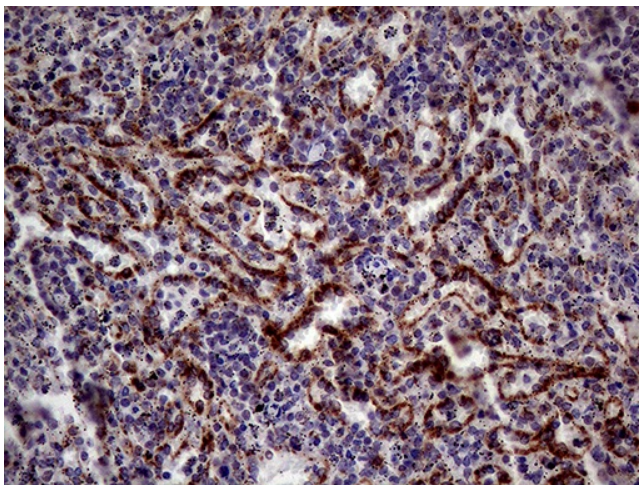
CD161; CLEC5B; hNKR-P1A; NKR; NKR-P1; NKR-P1A; NKR-P1A; NKR-P1A

Protein Families:

Transmembrane

Product images:

HEK293T cells were transfected with the pCMV6-ENTRY control (Cat# [PS100001], Left lane) or pCMV6-ENTRY KLRB1 (Cat# [RC216459], Right lane) cDNA for 48 hrs and lysed. Equivalent amounts of cell lysates (5 ug per lane) were separated by SDS-PAGE and immunoblotted with anti-KLRB1 (Cat# TA809736)(1:500). Positive lysates [LY419438] (100ug) and [LC419438] (20ug) can be purchased separately from OriGene.



Immunohistochemical staining of paraffin-embedded Human spleen tissue within the normal limits using anti-KLRB1 mouse monoclonal antibody. (Heat-induced epitope retrieval by Tris-EDTA (1:500))