

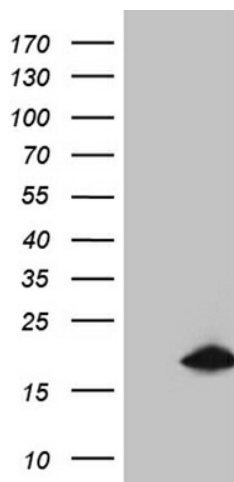
## Product datasheet for **TA809734M**

### **SDHAF1 Mouse Monoclonal Antibody [Clone ID: OTI2G3]**

#### **Product data:**

Product Type:	Primary Antibodies
Clone Name:	OTI2G3
Applications:	WB
Recommended Dilution:	WB 1:200
Reactivity:	Human
Host:	Mouse
Isotype:	IgG1
Clonality:	Monoclonal
Immunogen:	Full length human recombinant protein of human SDHAF1 (NP_001036096) produced in 293T.
Formulation:	PBS (pH 7.3) containing 1% BSA, 50% glycerol and 0.02% sodium azide.
Concentration:	1 mg/ml
Purification:	Purified from mouse ascites fluids or tissue culture supernatant by affinity chromatography (protein A/G)
Conjugation:	Unconjugated
Storage:	Store at -20°C as received.
Stability:	Stable for 12 months from date of receipt.
Gene Name:	succinate dehydrogenase complex assembly factor 1
Database Link:	<a href="#">NP_001036096</a> <a href="#">Entrez Gene 644096 Human</a> <a href="#">A6NFY7</a>
Synonyms:	LYRM8; MC2DN2

[View online »](#)

**Product images:**


HEK293T cells were transfected with the pCMV6-ENTRY control (Left lane) or pCMV6-ENTRY SDHAF1 ([RC216831], Right lane) cDNA for 48 hrs and lysed. Equivalent amounts of cell lysates (5 ug per lane) were separated by SDS-PAGE and immunoblotted with anti-SDHAF1 (1:200).