

Product datasheet for **TA809733BM**

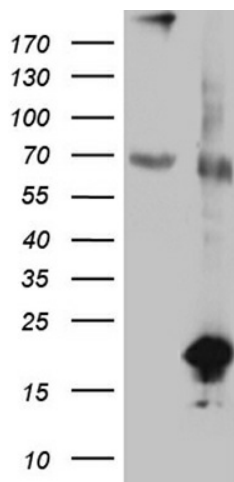
SDHAF1 Mouse Monoclonal Antibody (HRP conjugated) [Clone ID: OTI5C1]

Product data:

Product Type:	Primary Antibodies
Clone Name:	OTI5C1
Applications:	WB
Recommended Dilution:	WB 1:500
Reactivity:	Human
Host:	Mouse
Isotype:	IgG1
Clonality:	Monoclonal
Immunogen:	Full length human recombinant protein of human SDHAF1 (NP_001036096) produced in 293T.
Formulation:	PBS (pH 7.3) containing 1% BSA, 50% glycerol.
Concentration:	0.5 mg/ml
Purification:	Purified from mouse ascites fluids or tissue culture supernatant by affinity chromatography (protein A/G)
Conjugation:	HRP
Storage:	Store at -20°C as received.
Stability:	Stable for 12 months from date of receipt.
Gene Name:	succinate dehydrogenase complex assembly factor 1
Database Link:	NP_001036096 Entrez Gene 644096 Human A6NFY7
Synonyms:	LYRM8; MC2DN2



[View online »](#)

Product images:

HEK293T cells were transfected with the pCMV6-ENTRY control (Left lane) or pCMV6-ENTRY SDHAF1 ([RC216831], Right lane) cDNA for 48 hrs and lysed. Equivalent amounts of cell lysates (5 ug per lane) were separated by SDS-PAGE and immunoblotted with anti-SDHAF1 (1:500).