

## Product datasheet for **TA809730**

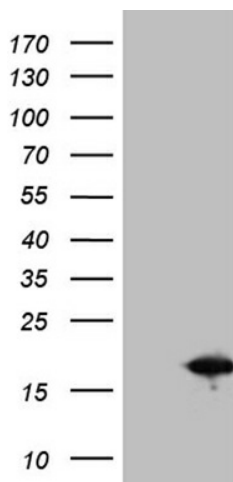
### SH3BGRL Mouse Monoclonal Antibody [Clone ID: OTI2H5]

#### Product data:

Product Type:	Primary Antibodies
Clone Name:	OTI2H5
Applications:	WB
Recommended Dilution:	WB 1:2000
Reactivity:	Human, Mouse, Rat
Host:	Mouse
Isotype:	IgG1
Clonality:	Monoclonal
Immunogen:	Full length human recombinant protein of human SH3BGRL (NP_003013) produced in E.coli.
Formulation:	PBS (pH 7.3) containing 1% BSA, 50% glycerol and 0.02% sodium azide.
Concentration:	1 mg/ml
Purification:	Purified from mouse ascites fluids or tissue culture supernatant by affinity chromatography (protein A/G)
Conjugation:	Unconjugated
Storage:	Store at -20°C as received.
Stability:	Stable for 12 months from date of receipt.
Predicted Protein Size:	12.6 kDa
Gene Name:	SH3 domain binding glutamate rich protein like
Database Link:	<a href="#">NP_003013</a> <a href="#">Entrez Gene 56726 Mouse</a> <a href="#">Entrez Gene 302363 Rat</a> <a href="#">Entrez Gene 6451 Human</a> <a href="#">O75368</a>
Synonyms:	HEL-S-115; SH3BGR



[View online »](#)

**Product images:**

HEK293T cells were transfected with the pCMV6-ENTRY control (Left lane) or pCMV6-ENTRY SH3BGRL ([RC204993], Right lane) cDNA for 48 hrs and lysed. Equivalent amounts of cell lysates (5 ug per lane) were separated by SDS-PAGE and immunoblotted with anti-SH3BGRL (1:2000). Positive lysates [LY418952] (100ug) and [LC418952] (20ug) can be purchased separately from OriGene.