

## Product datasheet for **TA809719BM**

### WDR77 Mouse Monoclonal Antibody (HRP conjugated) [Clone ID: OTI5E9]

#### Product data:

Product Type:	Primary Antibodies
Clone Name:	OTI5E9
Applications:	WB
Recommended Dilution:	WB 1:500~2000
Reactivity:	Human, Mouse, Rat
Host:	Mouse
Isotype:	IgG1
Clonality:	Monoclonal
Immunogen:	Human recombinant protein fragment corresponding to amino acids 1-250 of human WDR77 (NP_077007) produced in E.coli.
Formulation:	PBS (pH 7.3) containing 1% BSA, 50% glycerol.
Concentration:	0.5 mg/ml
Purification:	Purified from mouse ascites fluids or tissue culture supernatant by affinity chromatography (protein A/G)
Conjugation:	HRP
Storage:	Store at -20°C as received.
Stability:	Stable for 12 months from date of receipt.
Gene Name:	WD repeat domain 77
Database Link:	<a href="#">NP_077007</a> <a href="#">Entrez Gene 70465 Mouse</a> <a href="#">Entrez Gene 310769 Rat</a> <a href="#">Entrez Gene 79084 Human</a> <a href="#">Q9BQA1</a>



[View online »](#)

**Background:**

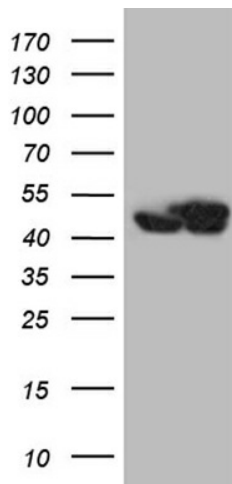
WDR77 is a component of the 20S PRMT5 (MIM 604045)-containing methyltransferase complex, which modifies specific arginines to dimethylarginines in several spliceosomal Sm proteins (see MIM 601061). This modification targets Sm proteins to the survival of motor neurons (SMN) complex (see MIM 600354) for assembly into small nuclear ribonucleoprotein core particles (Friesen et al., 2002 [PubMed 11756452]). [supplied by OMIM, Mar 2008].  
 Publication Note: This RefSeq record includes a subset of the publications that are available for this gene. Please see the Gene record to access additional publications. ##Evidence-Data-START## Transcript exon combination :: BC016946.1, BC001679.2 [ECO:0000332] RNAseq introns :: mixed/partial sample support ERS025081, ERS025082 [ECO:0000350] ##Evidence-Data-END##

**Synonyms:**

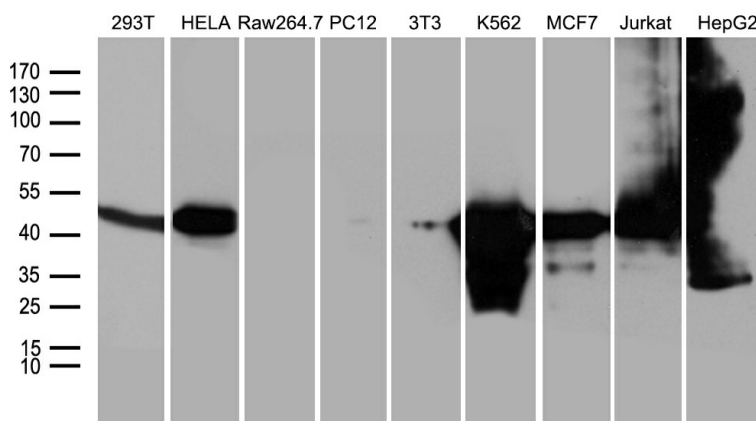
HKMT1069; MEP-50; MEP50; Nbla10071; p44; p44/Mep50

**Protein Families:**

Stem cell - Pluripotency

**Product images:**


HEK293T cells were transfected with the pCMV6-ENTRY control (Left lane) or pCMV6-ENTRY WDR77 ([RC204532], Right lane) cDNA for 48 hrs and lysed. Equivalent amounts of cell lysates (5 ug per lane) were separated by SDS-PAGE and immunoblotted with anti-WDR77 (1:2000). Positive lysates [LY411336] (100ug) and [LC411336] (20ug) can be purchased separately from OriGene.



Western blot analysis of extracts (35ug) from 9 different cell lines by using anti-WDR77 monoclonal antibody (1:500).