

## Product datasheet for **TA809714AM**

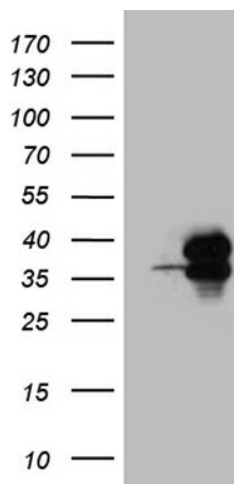
### PDCL3 Mouse Monoclonal Antibody (Biotin conjugated) [Clone ID: OTI6G6]

#### Product data:

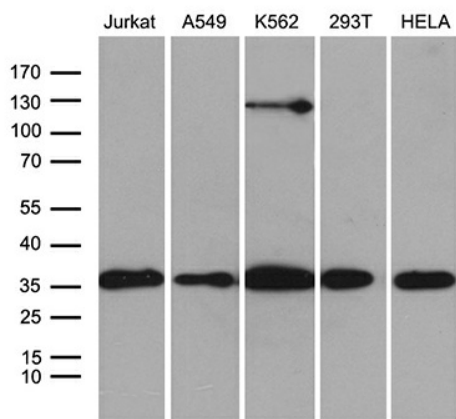
|                         |   |
|-------------------------|---|
| Product Type:           | Primary Antibodies  |
| Clone Name:             | OTI6G6  |
| Applications:           | WB  |
| Recommended Dilution:   | WB 1:500~2000   |
| Reactivity:             | Human, Mouse, Rat   |
| Host:                   | Mouse   |
| Isotype:                | IgG2b   |
| Clonality:              | Monoclonal  |
| Immunogen:              | Full length human recombinant protein of human PDCL3(NP_076970) produced in E.coli.   |
| Formulation:            | PBS (pH 7.3) containing 1% BSA, 50% glycerol and 0.02% sodium azide.  |
| Concentration:          | 0.5 mg/ml   |
| Purification:           | Purified from mouse ascites fluids or tissue culture supernatant by affinity chromatography (protein A/G)   |
| Conjugation:            | Biotin  |
| Storage:                | Store at -20°C as received.   |
| Stability:              | Stable for 12 months from date of receipt.  |
| Predicted Protein Size: | 27.4 kDa  |
| Gene Name:              | phosducin like 3  |
| Database Link:          | <a href="#">NP_076970</a><br><a href="#">Entrez Gene 68833 Mouse</a> <a href="#">Entrez Gene 316348 Rat</a> <a href="#">Entrez Gene 79031 Human</a><br><a href="#">Q9H2J4</a>   |
| Background:             | This gene encodes a member of the phosducin-like protein family and is a putative modulator of heterotrimeric G proteins. The protein shares extensive amino acid sequence homology with phosducin. Members of the phosducin-like protein family have been shown to bind to the beta-gamma subunits of G proteins. [provided by RefSeq, Jul 2008] |
| Synonyms:               | HTPHLP; PHLP2A; PHLP3; VIAF; VIAF1  |


[View online »](#)

## Product images:



HEK293T cells were transfected with the pCMV6-ENTRY control (Left lane) or pCMV6-ENTRY PDCL3 ([RC200958], Right lane) cDNA for 48 hrs and lysed. Equivalent amounts of cell lysates (5 ug per lane) were separated by SDS-PAGE and immunoblotted with anti-PDCL3 (1:2000). Positive lysates [LY411381] (100ug) and [LC411381] (20ug) can be purchased separately from OriGene.



Western blot analysis of extracts (35ug) from 5 different cell lines by using anti-PDCL3 monoclonal antibody (1:500).