

## Product datasheet for **TA809704**

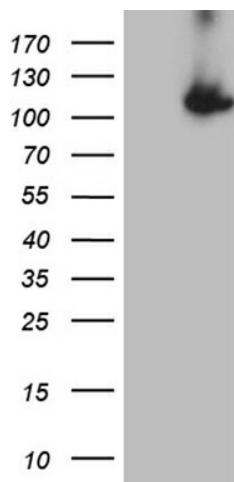
### L3MBTL3 Mouse Monoclonal Antibody [Clone ID: OTI6D7]

#### Product data:

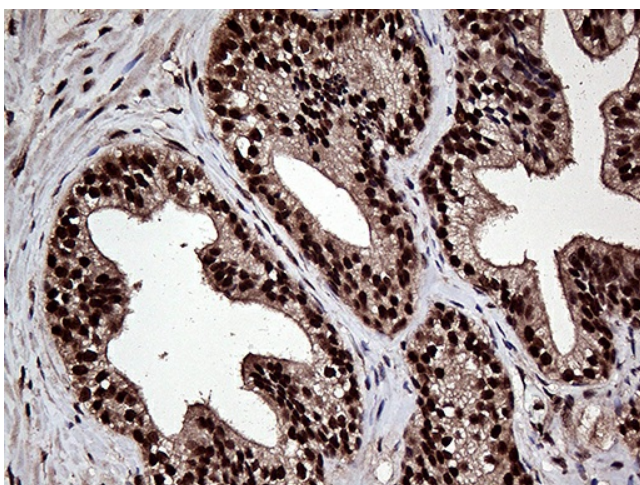
Product Type:	Primary Antibodies
Clone Name:	OTI6D7
Applications:	IHC, WB
Recommended Dilution:	WB 1:2000, IHC 1:1000
Reactivity:	Human, Mouse, Rat
Host:	Mouse
Isotype:	IgG1
Clonality:	Monoclonal
Immunogen:	Human recombinant protein fragment corresponding to amino acids 98-319 of human L3MBTL3 (NP_001007103) produced in E.coli.
Formulation:	PBS (pH 7.3) containing 1% BSA, 50% glycerol and 0.02% sodium azide.
Concentration:	1 mg/ml
Purification:	Purified from mouse ascites fluids or tissue culture supernatant by affinity chromatography (protein A/G)
Conjugation:	Unconjugated
Storage:	Store at -20°C as received.
Stability:	Stable for 12 months from date of receipt.
Predicted Protein Size:	85.6 kDa
Gene Name:	I(3)mbt-like 3 (Drosophila)
Database Link:	<a href="#">NP_001007103</a> <a href="#">Entrez Gene 237339 Mouse</a> <a href="#">Entrez Gene 309550 Rat</a> <a href="#">Entrez Gene 84456 Human</a> <a href="#">Q96JM7</a>
Background:	Putative Polycomb group (PcG) protein. PcG proteins maintain the transcriptionally repressive state of genes, probably via a modification of chromatin, rendering it heritably changed in its expressibility. Required for normal maturation of myeloid progenitor cells. [UniProtKB/Swiss-Prot Function]
Synonyms:	MBT-1; MBT1



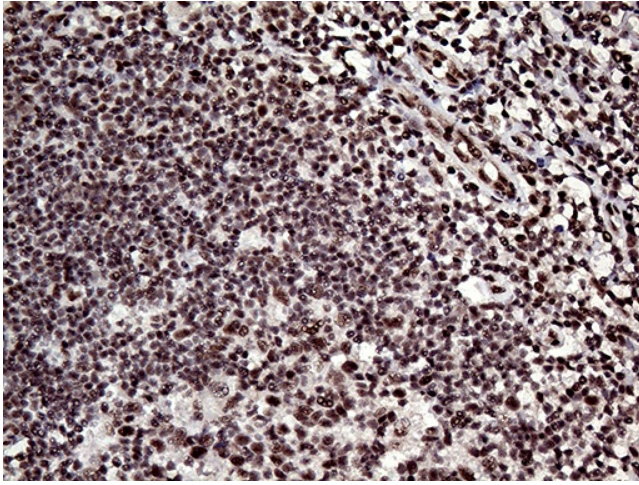
[View online »](#)

**Product images:**

HEK293T cells were transfected with the pCMV6-ENTRY control (Cat# [PS100001], Left lane) or pCMV6-ENTRY L3MBTL3 (Cat# [RC209288], Right lane) cDNA for 48 hrs and lysed. Equivalent amounts of cell lysates (5 ug per lane) were separated by SDS-PAGE and immunoblotted with anti-L3MBTL3 (Cat# TA809704)(1:2000). Positive lysates [LY422800] (100ug) and [LC422800] (20ug) can be purchased separately from OriGene.



Immunohistochemical staining of paraffin-embedded Carcinoma of Human prostate tissue using anti-L3MBTL3 mouse monoclonal antibody. (Heat-induced epitope retrieval by 1mM EDTA in 10mM Tris buffer (pH8.5) at 120°C for 3min, TA809704) (1:1000)



Immunohistochemical staining of paraffin-embedded Human lymph node tissue within the normal limits using anti-L3MBTL3 mouse monoclonal antibody. (Heat-induced epitope retrieval by 1mM EDTA in 10mM Tris buffer (pH8.5) at 120°C for 3min, TA809704) (1:1000)