

Product datasheet for **TA809699**

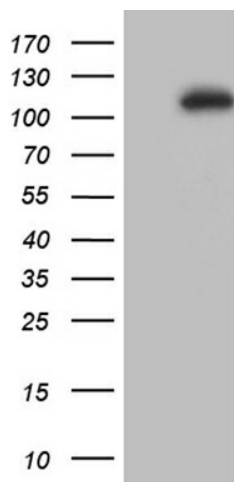
L3MBTL3 Mouse Monoclonal Antibody [Clone ID: OTI1B5]

Product data:

Product Type:	Primary Antibodies
Clone Name:	OTI1B5
Applications:	WB
Recommended Dilution:	WB 1:500
Reactivity:	Human, Mouse, Rat
Host:	Mouse
Isotype:	IgG2a
Clonality:	Monoclonal
Immunogen:	Human recombinant protein fragment corresponding to amino acids 98-319 of human L3MBTL3 (NP_001007103) produced in E.coli.
Formulation:	PBS (pH 7.3) containing 1% BSA, 50% glycerol and 0.02% sodium azide.
Concentration:	1 mg/ml
Purification:	Purified from mouse ascites fluids or tissue culture supernatant by affinity chromatography (protein A/G)
Conjugation:	Unconjugated
Storage:	Store at -20°C as received.
Stability:	Stable for 12 months from date of receipt.
Predicted Protein Size:	85.6 kDa
Gene Name:	I(3)mbt-like 3 (Drosophila)
Database Link:	NP_001007103 Entrez Gene 237339 Mouse Entrez Gene 309550 Rat Entrez Gene 84456 Human Q96JM7
Background:	Putative Polycomb group (PcG) protein. PcG proteins maintain the transcriptionally repressive state of genes, probably via a modification of chromatin, rendering it heritably changed in its expressibility. Required for normal maturation of myeloid progenitor cells. [UniProtKB/Swiss-Prot Function]
Synonyms:	MBT-1; MBT1



[View online »](#)

Product images:

HEK293T cells were transfected with the pCMV6-ENTRY control (Left lane) or pCMV6-ENTRY L3MBTL3 ([RC209288], Right lane) cDNA for 48 hrs and lysed. Equivalent amounts of cell lysates (5 ug per lane) were separated by SDS-PAGE and immunoblotted with anti-L3MBTL3 (1:500). Positive lysates [LY422800] (100ug) and [LC422800] (20ug) can be purchased separately from OriGene.