

## Product datasheet for **TA809694BM**

### **PCTAIRE2 (CDK17) Mouse Monoclonal Antibody (HRP conjugated) [Clone ID: OTI2E11]**

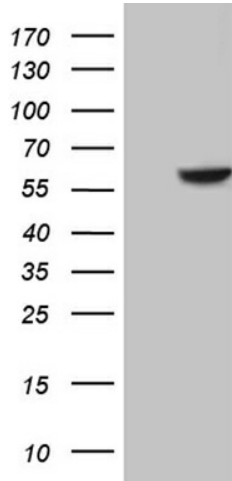
#### **Product data:**

Product Type:	Primary Antibodies
Clone Name:	OTI2E11
Applications:	WB
Recommended Dilution:	WB 1:2000
Reactivity:	Human, Mouse, Rat
Host:	Mouse
Isotype:	IgG1
Clonality:	Monoclonal
Immunogen:	Human recombinant protein fragment corresponding to amino acids 6-132 of human CDK17 (NP_001163935) produced in E.coli.
Formulation:	PBS (pH 7.3) containing 1% BSA, 50% glycerol.
Concentration:	0.5 mg/ml
Purification:	Purified from mouse ascites fluids or tissue culture supernatant by affinity chromatography (protein A/G)
Conjugation:	HRP
Storage:	Store at -20°C as received.
Stability:	Stable for 12 months from date of receipt.
Gene Name:	cyclin-dependent kinase 17
Database Link:	<a href="#">NP_001163935</a> <a href="#">Entrez Gene 237459</a> <a href="#">MouseEntrez Gene 314743</a> <a href="#">RatEntrez Gene 5128</a> <a href="#">Human Q00537</a>
Background:	The protein encoded by this gene belongs to the cdc2/cdkx subfamily of the ser/thr family of protein kinases. It has similarity to a rat protein that is thought to play a role in terminally differentiated neurons. Alternatively spliced transcript variants encoding different isoforms have been found. [provided by RefSeq, Jul 2010]
Synonyms:	PCTAIRE2; PCK2
Protein Families:	Druggable Genome, Protein Kinase



[View online »](#)

**Product images:**



HEK293T cells were transfected with the pCMV6-ENTRY control (Cat# [PS100001], Left lane) or pCMV6-ENTRY CDK17 (Cat# [RC230226], Right lane) cDNA for 48 hrs and lysed. Equivalent amounts of cell lysates (5 ug per lane) were separated by SDS-PAGE and immunoblotted with anti-CDK17(Cat# [TA809694]). Positive lysates [LY433226] (100ug) and [LC433226] (20ug) can be purchased separately from OriGene.